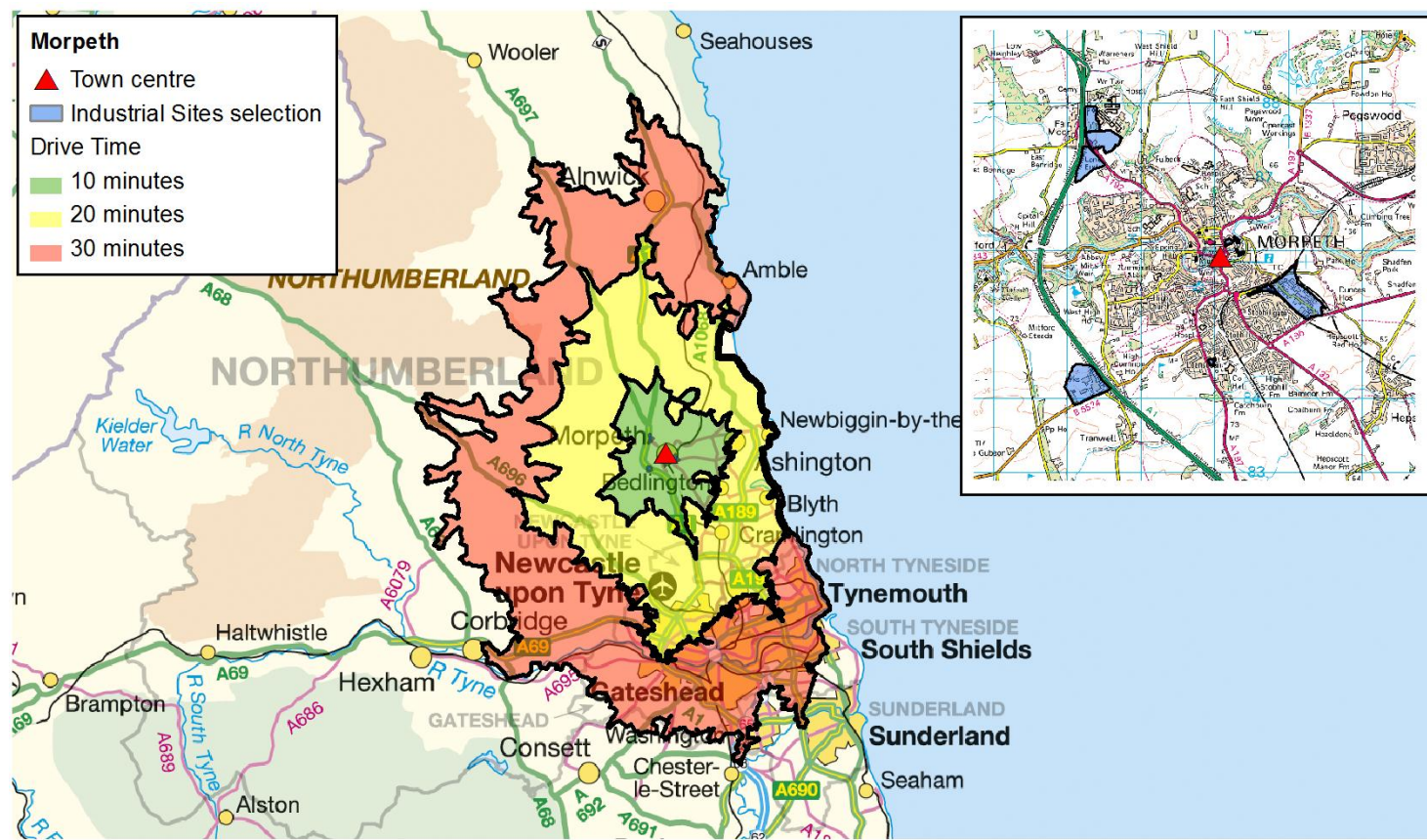


This fact sheet relates to people living within a 10, 20 and 30 minute drive time of Morpeth.



Published September 2013. Scale: 1:800,000 © Crown Copyright. All rights reserved. Northumberland County Council - OS Licence No. 100049048. Road network and journey time data provided by the Department for Transport and Trafficmaster.

WHO WE ARE	10 Minutes		20 Minutes		30 Minutes	
Key Population Statistics (all usual residents)	Number	Per cent	Number	Per cent	Number	Per cent
All People	37,599	-	345,342	-	1,030,006	-
Males	18,208	48.4	167,750	48.6	504,990	49.0
Females	19,391	51.6	177,592	51.4	525,016	51.0
16 – 64 years	23,122	61.5	220,781	63.9	676,414	65.7
16 – 24	3,328	8.9	36,042	10.4	133,924	13.0
25 - 44	8,477	22.5	88,019	25.5	268,942	26.1
45 – 64	11,317	30.1	96,720	28.0	273,548	26.6
65 -74 years	4,059	10.8	32,095	9.3	90,321	8.8
Number of people per hectare	1.9	-	4.4	-	5.5	-
HOW WE LIVE	10 Minutes		20 Minutes		30 Minutes	
Households (all household spaces)	Number	Per cent	Number	Per cent	Number	Per cent
All Households	16,623	96.5	150,128	96.6	451,515	96.1
Average Household size	2.2	-	2.3	-	2.2	-
Household by Tenure (all households)	Number	Per cent	Number	Per cent	Number	Per cent
Owned outright	5,864	35.3	43,658	29.1	119,095	26.4
Owned with a mortgage or loan/shared ownership	5,889	35.4	53,745	35.8	147,984	32.8
Social rented	2,740	16.5	34,208	22.8	116,837	25.9
Private rented including living rent free	2,130	12.8	18,517	12.3	67,599	15.0
Car or Van Availability (all households)	Number	Per cent	Number	Per cent	Number	Per cent
No cars or vans in household	3,562	21.4	42,311	28.2	153,978	34.1
1 car or van in household	7,171	43.1	66,066	44.0	190,030	42.1
2 or more cars or vans in household	5,890	35.4	41,751	27.8	107,507	23.8
Average number of cars or vans per household	1.2	-	1.1	-	1.0	-

WHAT WE DO	10 Minutes		20 Minutes		30 Minutes	
	Number	Per cent	Number	Per cent	Number	Per cent
Economic activity (aged 16-74)						
Economically active	18,461	67.9	171,964	68.0	512,423	66.8
Full-time employee	10,588	39.0	98,773	39.1	288,791	37.7
Part-time employee	3,821	14.1	36,676	14.5	106,029	13.8
Self-employed	2,323	8.5	17,400	6.9	49,443	6.4
Unemployed	1,125	4.1	12,506	4.9	39,350	5.1
Full-time student	604	2.2	6,609	2.6	28,810	3.8
Economically inactive	8,720	32.1	80,912	32.0	254,312	33.2
Industry (aged 16-74 in employment)	Number	Per cent	Number	Per cent	Number	Per cent
Agriculture, forestry & fishing	221	1.3	800	0.5	1,927	0.4
Mining & quarrying	88	0.5	675	0.4	1,723	0.4
Manufacturing	1,464	8.5	13,983	8.9	41,438	8.9
Elec, gas, steam & air conditioning supply; Water supply; sewerage	242	1.4	1,975	1.3	5,982	1.3
Construction	1,190	6.9	12,389	7.8	34,646	7.4
Whsale & ret trade; repair motor vehicles...	2,330	13.5	23,535	14.9	70,635	15.2
Transport & Storage	646	3.7	7,447	4.7	21,929	4.7
Accommodation & Food Svc Activities	834	4.8	8,609	5.4	28,591	6.1
Information & Communication	422	2.4	4,990	3.2	15,426	3.3
Financial & Insurance Activities	419	2.4	5,010	3.2	14,016	3.0
Real Estate; Professional, Scientific & Technical; Admin. & Support Svc.	1,784	10.4	16,713	10.6	51,046	11.0
Pub Admin & Defence; Compulsory Social Security	1,809	10.5	15,385	9.7	42,374	9.1
Education	1,779	10.3	14,279	9.0	44,326	9.5
Human Health & Social Work	3,214	18.6	25,215	16.0	70,255	15.1
Other	794	4.6	6,962	4.4	21,592	4.6
Occupation (aged 16-74 in employment)	Number	Per cent	Number	Per cent	Number	Per cent
Managers, Directors and Senior Officials	1,876	10.9	13,977	8.8	39,896	8.6
Professional Occupations	3,496	20.3	25,763	16.3	77,518	16.6
Associate Professional and Technical Occupations	2,157	12.5	17,991	11.4	53,246	11.4
Administrative and Secretarial Occupations	1,964	11.4	20,847	13.2	59,718	12.8
Skilled Trades Occupations	1,835	10.6	17,766	11.2	51,023	11.0
Caring, Leisure and Other Service Occupations	1,842	10.7	15,929	10.1	45,015	9.7
Sales and Customer Service Occupations	1,329	7.7	16,161	10.2	49,527	10.6
Process, Plant and Machine Operatives	1,077	6.2	12,009	7.6	35,240	7.6
Elementary Occupations	1,660	9.6	17,524	11.1	54,723	11.7
Socio-Economic Classification (aged 16-74 in employment)	Number	Per cent	Number	Per cent	Number	Per cent
Higher Managerial, Admin & Prof Occupations	2,965	10.9	22,222	8.8	64,718	8.4
Lower Managerial, Admin & Prof Occupations	6,687	24.6	50,236	19.9	144,209	18.8
Intermediate Occupations	3,775	13.9	36,341	14.4	103,437	13.5
Small Employers & Own Account Workers	2,288	8.4	17,862	7.1	50,083	6.5
Lower Supervisory & Technical Occupations	2,024	7.4	19,996	7.9	57,082	7.4
Semi-Routine Occupations	3,718	13.7	40,618	16.1	119,652	15.6
Routine Occupations	2,959	10.9	34,048	13.5	101,557	13.2
Never Worked and Long-Term Unemployed	1,205	4.4	14,836	5.9	47,869	6.2
Not Classified	1,560	5.7	16,717	6.6	78,128	10.2
Highest Level of Qualification (aged 16+)	Number	Per cent	Number	Per cent	Number	Per cent
No qualifications	7,040	22.6	72,065	25.6	213,785	25.2
Level 1 qualifications	3,736	12.0	40,213	14.3	114,819	13.5
Level 2 qualifications	4,842	15.5	45,434	16.1	129,340	15.2
Apprenticeship	1,200	3.8	13,052	4.6	39,678	4.7
Level 3 qualifications	3,796	12.2	33,614	11.9	113,348	13.3
Level 4 qualifications and above	9,506	30.5	66,294	23.5	203,239	23.9
Other qualifications	1,089	3.5	10,870	3.9	34,977	4.1