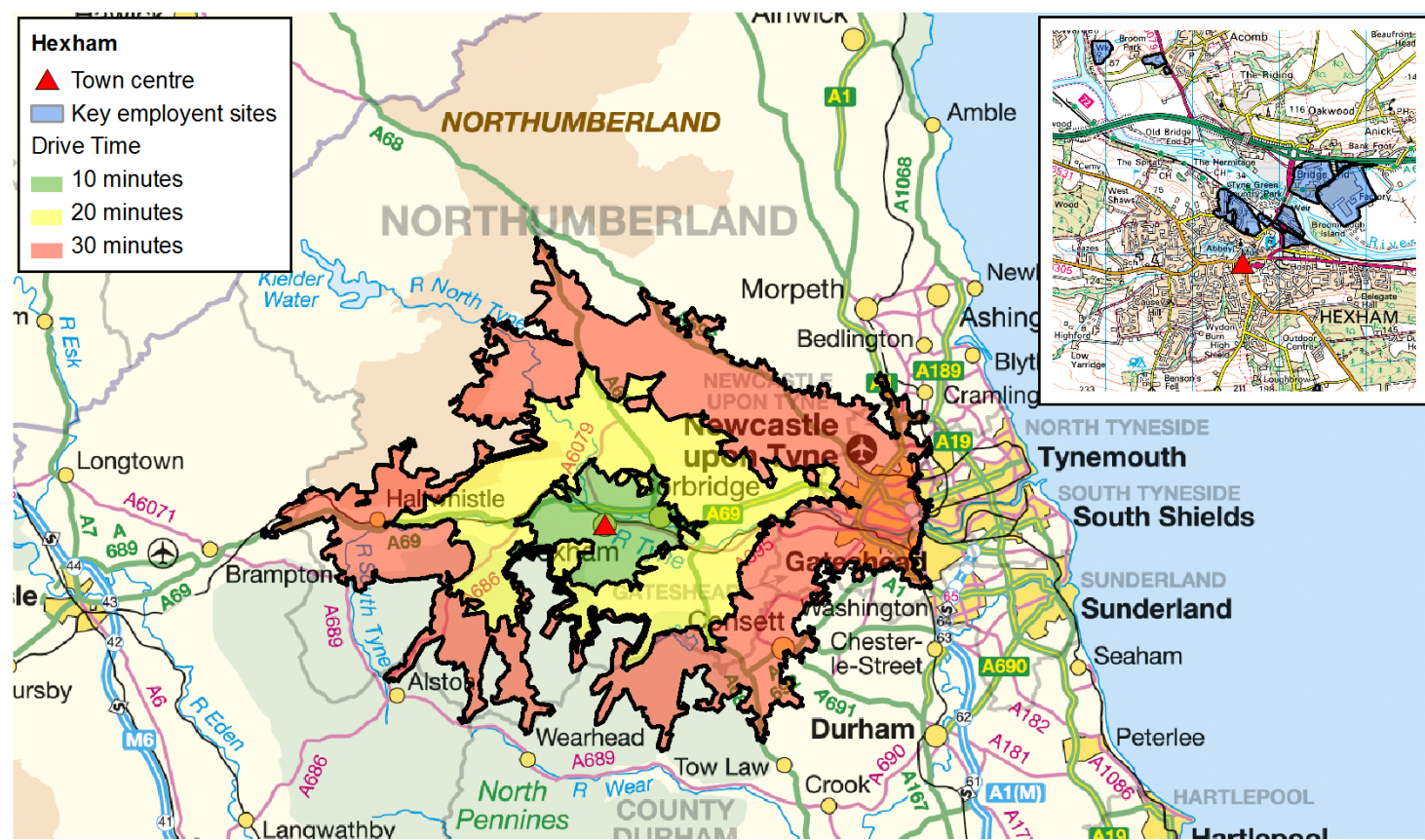


This fact sheet relates to people living within a 10, 20 and 30 minute drive time of Hexham.



Published September 2013. Scale: 1:750,000 © Crown Copyright. All rights reserved. Northumberland County Council - OS Licence No. 100049048.
Road network and journey time data provided by the Department for Transport and Trafficmaster.

WHO WE ARE	10 Minutes		20 Minutes		30 Minutes	
Key Population Statistics (all usual residents)	Number	Per cent	Number	Per cent	Number	Per cent
All People	18,467	-	51,475	-	418,663	-
Males	8,832	47.8	24,978	48.5	207,039	49.5
Females	9,635	52.2	26,497	51.5	211,624	50.5
16 – 64 years	11,159	60.4	31,880	61.9	276,092	65.9
16 – 24	1,794	9.7	4,875	9.5	62,380	14.9
25 - 44	3,659	19.8	10,787	21.0	106,708	25.5
45 – 64	5,706	30.9	16,218	31.5	107,004	25.6
65 -74 years	2,126	11.5	5,728	11.1	36,450	8.7
Number of people per hectare	1.5	-	0.6	-	2.1	-
HOW WE LIVE	10 Minutes		20 Minutes		30 Minutes	
Households (all household spaces)	Number	Per cent	Number	Per cent	Number	Per cent
All Households	8,072	94.8	21,960	95.0	178,063	95.6
Average Household size	2.2	-	2.3	-	2.3	-
Household by Tenure (all households)	Number	Per cent	Number	Per cent	Number	Per cent
Owned outright	3,208	39.7	8,239	37.5	50,267	28.2
Owned with a mortgage or loan/shared ownership	2,372	29.4	7,137	32.5	55,563	31.2
Social rented	1,207	15.0	3,209	14.6	41,109	23.1
Private rented including living rent free	1,285	15.9	3,375	15.4	31,124	17.5
Car or Van Availability (all households)	Number	Per cent	Number	Per cent	Number	Per cent
No cars or vans in household	1,604	19.9	3,882	17.7	58,616	32.9
1 car or van in household	3,609	44.7	9,338	42.5	72,959	41.0
2 or more cars or vans in household	2,859	35.4	8,740	39.8	46,488	26.1
Average number of cars or vans per household	1.3	-	1.4	-	1.0	-

WHAT WE DO	10 Minutes		20 Minutes		30 Minutes	
Economic activity (aged 16-74)	Number	Per cent	Number	Per cent	Number	Per cent
Economically active	9,135	68.8	26,373	70.1	204,342	65.4
Full-time employee	4,811	36.2	13,990	37.2	110,940	35.5
Part-time employee	2,010	15.1	5,615	14.9	41,384	13.2
Self-employed	1,613	12.1	4,806	12.8	24,042	7.7
Unemployed	398	3.0	1,116	3.0	13,576	4.3
Full-time student	303	2.3	846	2.2	14,400	4.6
Economically inactive	4,150	31.2	11,235	29.9	108,200	34.6
Industry (aged 16-74 in employment)	Number	Per cent	Number	Per cent	Number	Per cent
Agriculture, forestry & fishing	146	1.7	759	3.0	1,669	0.9
Mining & quarrying	34	0.4	84	0.3	432	0.2
Manufacturing	631	7.3	1,905	7.6	15,565	8.3
Elec, gas, steam & air conditioning supply; Water supply; sewerage	80	0.9	257	1.0	2,143	1.1
Construction	589	6.8	1,867	7.4	13,246	7.1
Wholesale & retail trade; repair motor vehicles...	1,300	14.9	3,430	13.7	28,512	15.2
Transport & Storage	313	3.6	1,010	4.0	8,899	4.8
Accommodation & Food Svc Activities	530	6.1	1,456	5.8	13,250	7.1
Information & Communication	246	2.8	753	3.0	6,108	3.3
Financial & Insurance Activities	221	2.5	595	2.4	5,574	3.0
Real Estate; Professional, Scientific & Technical; Admin. & Support Svc.	1,144	13.2	3,131	12.5	21,822	11.7
Pub Admin & Defence; Compulsory Social Security	468	5.4	1,664	6.6	13,485	7.2
Education	1,040	12.0	2,823	11.2	18,853	10.1
Human Health & Social Work	1,427	16.4	3,952	15.7	28,251	15.1
Other	529	6.1	1,431	5.7	9,320	5.0
Occupation (aged 16-74 in employment)	Number	Per cent	Number	Per cent	Number	Per cent
Managers, Directors and Senior Officials	1,150	13.2	3,168	12.6	17,834	9.5
Professional Occupations	1,952	22.4	5,289	21.1	34,745	18.6
Associate Professional and Technical Occupations	1,040	12.0	2,999	11.9	21,065	11.3
Administrative and Secretarial Occupations	745	8.6	2,387	9.5	20,837	11.1
Skilled Trades Occupations	950	10.9	3,124	12.4	20,388	10.9
Caring, Leisure and Other Service Occupations	886	10.2	2,475	9.9	17,790	9.5
Sales and Customer Service Occupations	653	7.5	1,804	7.2	19,157	10.2
Process, Plant and Machine Operatives	481	5.5	1,596	6.4	13,445	7.2
Elementary Occupations	841	9.7	2,275	9.1	21,868	11.7
Socio-Economic Classification (aged 16-74 in employment)	Number	Per cent	Number	Per cent	Number	Per cent
Higher Managerial, Admin & Prof Occupations	1,954	14.7	5,041	13.4	30,149	9.6
Lower Managerial, Admin & Prof Occupations	3,376	25.4	9,388	25.0	59,115	18.9
Intermediate Occupations	1,428	10.7	4,426	11.8	36,836	11.8
Small Employers & Own Account Workers	1,469	11.1	4,465	11.9	23,157	7.4
Lower Supervisory & Technical Occupations	829	6.2	2,527	6.7	21,069	6.7
Semi-Routine Occupations	1,791	13.5	4,979	13.2	45,042	14.4
Routine Occupations	1,139	8.6	3,363	8.9	35,693	11.4
Never Worked and Long-Term Unemployed	430	3.2	1,177	3.1	18,432	5.9
Not Classified	869	6.5	2,242	6.0	43,049	13.8
Highest Level of Qualification (aged 16+)	Number	Per cent	Number	Per cent	Number	Per cent
No qualifications	2,960	19.1	8,303	19.3	80,599	23.3
Level 1 qualifications	1,643	10.6	4,893	11.4	42,545	12.3
Level 2 qualifications	2,296	14.8	6,539	15.2	49,305	14.2
Apprenticeship	522	3.4	1,688	3.9	13,737	4.0
Level 3 qualifications	1,725	11.1	4,919	11.5	49,892	14.4
Level 4 qualifications and above	5,895	38.0	15,138	35.3	94,123	27.2
Other qualifications	484	3.1	1,440	3.4	16,057	4.6