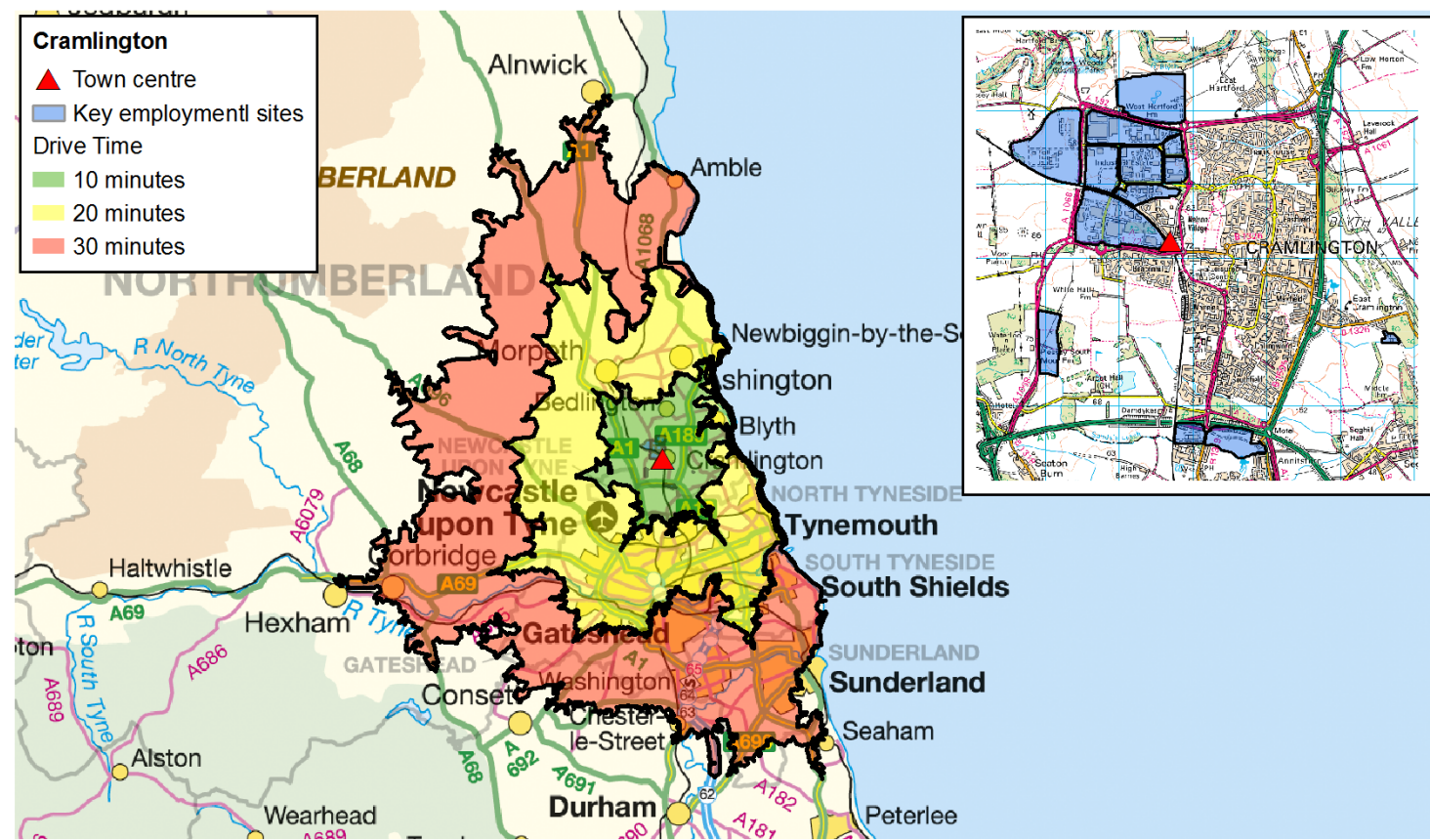


This fact sheet relates to people living within a 10, 20 and 30 minute drive time of Cramlington.



Published September 2013. Scale: 1:725,000 © Crown Copyright. All rights reserved. Northumberland County Council - OS Licence No. 100049048. Road network and journey time data provided by the Department for Transport and Trafficmaster.

WHO WE ARE	10 Minutes		20 Minutes		30 Minutes	
Key Population Statistics (all usual residents)	Number	Per cent	Number	Per cent	Number	Per cent
All People	100,593	-	760,086	-	1,332,440	-
Males	48,665	48.4	373,035	49.1	651,084	48.9
Females	51,928	51.6	387,051	50.9	681,356	51.1
16 – 64 years	64,931	64.5	502,888	66.2	871,640	65.4
16 – 24	10,343	10.3	104,827	13.8	169,185	12.7
25 - 44	25,585	25.4	198,938	26.2	343,064	25.7
45 – 64	29,003	28.8	199,123	26.2	359,391	27.0
65 -74 years	9,726	9.7	64,790	8.5	119,484	9.0
Number of people per hectare	7.2	-	10.9	-	8.3	-
HOW WE LIVE	10 Minutes		20 Minutes		30 Minutes	
Households (all household spaces)	Number	Per cent	Number	Per cent	Number	Per cent
All Households	43,811	97.1	332,381	96.3	583,483	96.4
Average Household size	2.3	-	2.2	-	2.2	-
Household by Tenure (all households)	Number	Per cent	Number	Per cent	Number	Per cent
Owned outright	12,609	28.8	87,330	26.3	157,989	27.1
Owned with a mortgage or loan/shared ownership	17,070	39.0	109,470	32.9	194,024	33.3
Social rented	9,372	21.4	84,133	25.3	149,950	25.7
Private rented including living rent free	4,760	10.9	51,448	15.5	81,520	14.0
Car or Van Availability (all households)	Number	Per cent	Number	Per cent	Number	Per cent
No cars or vans in household	10,210	23.3	113,489	34.1	197,610	33.9
1 car or van in household	20,040	45.7	140,391	42.2	245,360	42.1
2 or more cars or vans in household	13,561	31.0	78,501	23.6	140,513	24.1
Average number of cars or vans per household	1.2	-	1.0	-	1.0	-

WHAT WE DO	10 Minutes		20 Minutes		30 Minutes	
	Number	Per cent	Number	Per cent	Number	Per cent
Economic activity (aged 16-74)						
Economically active	51,556	69.1	378,435	66.7	661,133	66.7
Full-time employee	30,485	40.8	212,482	37.4	373,464	37.7
Part-time employee	11,045	14.8	77,381	13.6	138,001	13.9
Self-employed	4,658	6.2	35,838	6.3	62,195	6.3
Unemployed	3,527	4.7	29,070	5.1	51,618	5.2
Full-time student	1,841	2.5	23,664	4.2	35,855	3.6
Economically inactive	23,101	30.9	189,243	33.3	329,991	33.3
Industry (aged 16-74 in employment)	Number	Per cent	Number	Per cent	Number	Per cent
Agriculture, forestry & fishing	182	0.4	887	0.3	1,841	0.3
Mining & quarrying	204	0.4	1,266	0.4	2,330	0.4
Manufacturing	5,233	11.0	28,946	8.4	57,411	9.6
Elec, gas, steam & air conditioning supply; Water supply; sewerage	628	1.3	4,268	1.2	9,028	1.5
Construction	4,044	8.5	24,850	7.2	44,958	7.5
Whsale & ret trade; repair motor vehicles...	7,332	15.4	51,620	15.0	92,070	15.3
Transport & Storage	2,251	4.7	15,813	4.6	29,186	4.9
Accommodation & Food Svc Activities	2,274	4.8	21,662	6.3	35,522	5.9
Information & Communication	1,522	3.2	11,980	3.5	18,606	3.1
Financial & Insurance Activities	1,557	3.3	10,628	3.1	18,741	3.1
Real Estate; Professional, Scientific & Technical; Admin. & Support Svc.	4,776	10.0	38,096	11.1	64,397	10.7
Pub Admin & Defence; Compulsory Social Security	5,119	10.8	31,245	9.1	53,008	8.8
Education	3,772	7.9	33,193	9.7	56,572	9.4
Human Health & Social Work	6,689	14.1	52,846	15.4	89,403	14.9
Other	2,004	4.2	16,092	4.7	27,339	4.6
Occupation (aged 16-74 in employment)	Number	Per cent	Number	Per cent	Number	Per cent
Managers, Directors and Senior Officials	4,085	8.6	29,120	8.5	50,732	8.4
Professional Occupations	6,181	13.0	59,288	17.3	95,513	15.9
Associate Professional and Technical Occupations	5,830	12.3	39,331	11.5	67,230	11.2
Administrative and Secretarial Occupations	7,028	14.8	44,288	12.9	77,399	12.9
Skilled Trades Occupations	5,675	11.9	36,265	10.6	67,013	11.2
Caring, Leisure and Other Service Occupations	4,729	9.9	33,068	9.6	58,244	9.7
Sales and Customer Service Occupations	5,052	10.6	37,163	10.8	65,128	10.8
Process, Plant and Machine Operatives	3,960	8.3	24,906	7.3	48,104	8.0
Elementary Occupations	5,047	10.6	39,963	11.6	71,049	11.8
Socio-Economic Classification (aged 16-74 in employment)	Number	Per cent	Number	Per cent	Number	Per cent
Higher Managerial, Admin & Prof Occupations	5,507	7.4	49,208	8.7	78,966	8.0
Lower Managerial, Admin & Prof Occupations	15,015	20.1	106,692	18.8	184,108	18.6
Intermediate Occupations	11,959	16.0	76,294	13.4	135,898	13.7
Small Employers & Own Account Workers	5,010	6.7	35,812	6.3	64,315	6.5
Lower Supervisory & Technical Occupations	6,457	8.6	40,860	7.2	75,355	7.6
Semi-Routine Occupations	12,370	16.6	86,279	15.2	158,143	16.0
Routine Occupations	10,309	13.8	72,280	12.7	136,391	13.8
Never Worked and Long-Term Unemployed	3,682	4.9	35,657	6.3	62,290	6.3
Not Classified	4,348	5.8	64,596	11.4	95,658	9.7
Highest Level of Qualification (aged 16+)	Number	Per cent	Number	Per cent	Number	Per cent
No qualifications	20,524	25.0	154,025	24.5	283,898	25.8
Level 1 qualifications	12,877	15.7	82,895	13.2	152,285	13.9
Level 2 qualifications	14,118	17.2	94,075	15.0	170,124	15.5
Apprenticeship	4,326	5.3	28,308	4.5	52,956	4.8
Level 3 qualifications	10,721	13.0	87,916	14.0	143,285	13.0
Level 4 qualifications and above	16,713	20.3	154,151	24.6	252,092	22.9
Other qualifications	2,978	3.6	26,252	4.2	44,717	4.1