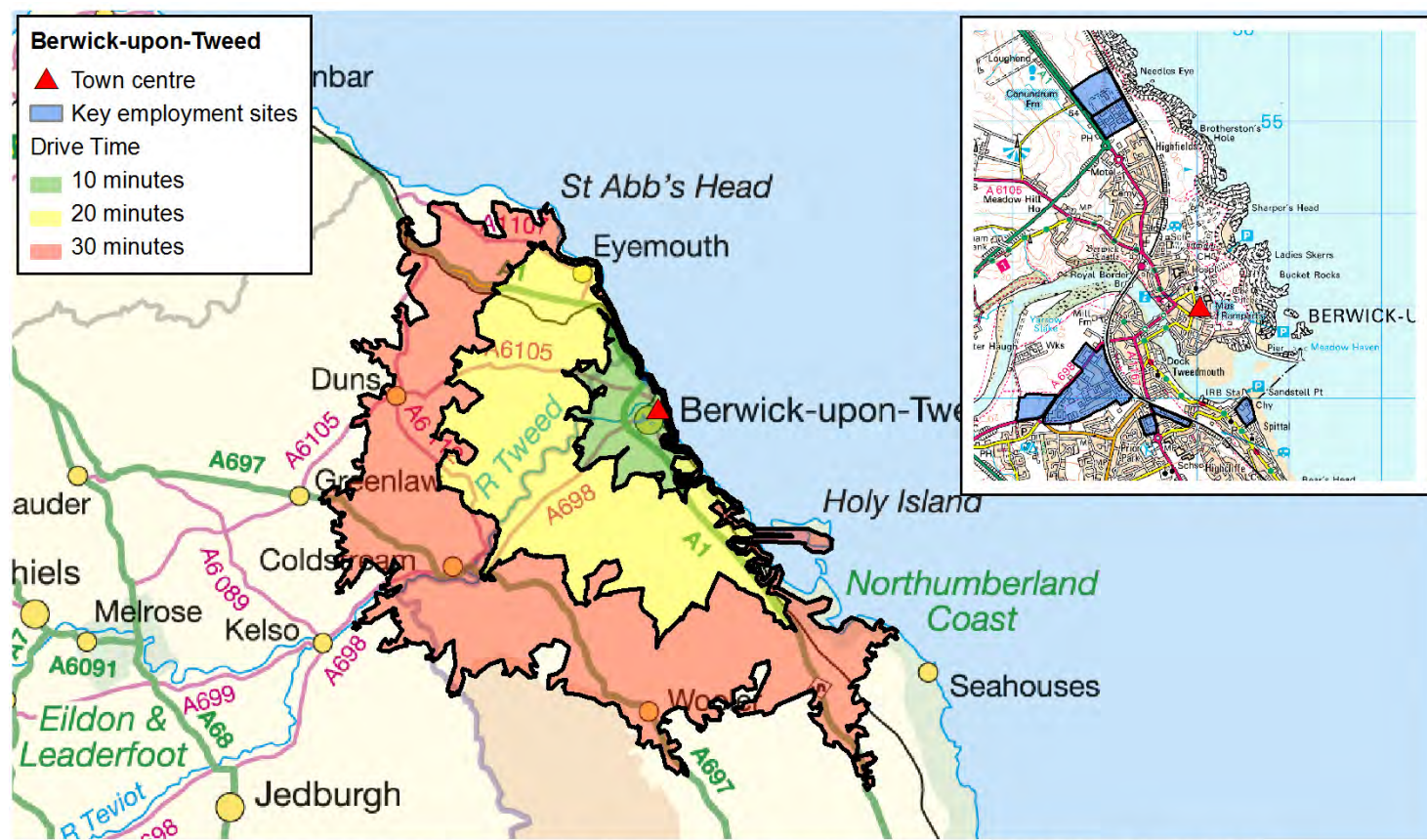


This fact sheet relates to people living within a 10, 20 and 30 minute drive time of Berwick-upon-Tweed.



Published September 2013. Scale: 1:600,000 © Crown Copyright. All rights reserved. Northumberland County Council - OS Licence No. 100049048. Road network and journey time data provided by the Department for Transport and Trafficmaster.

WHO WE ARE	10 Minutes		20 Minutes		30 Minutes	
Key Population Statistics (all usual residents)	Number	Per cent	Number	Per cent	Number	Per cent
All People	14,675	-	26,682	-	41,256	-
Males	7,006	47.7	12,890	48.3	20,008	48.5
Females	7,669	52.3	13,792	51.7	21,248	51.5
16 – 64 years	8,949	61.0	16,265	61.0	25,045	60.7
16 – 24	1,385	9.4	2,449	9.2	3,655	8.9
25 - 44	3,300	22.5	5,725	21.5	8,474	20.5
45 – 64	4,264	29.1	8,091	30.3	12,916	31.3
65 -74 years	1,668	11.4	3,240	12.1	5,281	12.8
Number of people per hectare	1.9	-	0.6	-	0.4	-
HOW WE LIVE	10 Minutes		20 Minutes		30 Minutes	
Households (all household spaces)	Number	Per cent	Number	Per cent	Number	Per cent
All Households	6,560	92.5	12,034	91.2	18,918	89.0
Average Household size	2.2	-	2.2	-	2.2	-
Household by Tenure (all households)	Number	Per cent	Number	Per cent	Number	Per cent
Owned outright	2,228	34.0	4,223	35.1	6,691	35.4
Owned with a mortgage or loan/shared ownership	1,806	27.5	3,136	26.1	4,590	24.3
Social rented	1,483	22.6	2,652	22.0	3,960	20.9
Private rented including living rent free	1,043	15.9	2,023	16.8	3,677	19.4
Car or Van Availability (all households)	Number	Per cent	Number	Per cent	Number	Per cent
No cars or vans in household	1,822	27.8	2,735	22.7	3,850	20.4
1 car or van in household	3,192	48.7	5,758	47.8	9,017	47.7
2 or more cars or vans in household	1,546	23.6	3,541	29.4	6,051	32.0
Average number of cars or vans per household	1.0	-	1.2	-	1.2	-

WHAT WE DO	10 Minutes		20 Minutes		30 Minutes	
	Number	Per cent	Number	Per cent	Number	Per cent
Economic activity (aged 16-74)						
Economically active	7,309	68.8	13,190	67.6	20,396	67.3
Full-time employee	3,779	35.6	6,615	33.9	10,120	33.4
Part-time employee	1,833	17.3	3,192	16.4	4,755	15.7
Self-employed	1,038	9.8	2,273	11.7	3,925	12.9
Unemployed	440	4.1	766	3.9	1,130	3.7
Full-time student	219	2.1	344	1.8	466	1.5
Economically inactive	3,308	31.2	6,315	32.4	9,930	32.7
Industry (aged 16-74 in employment)	Number	Per cent	Number	Per cent	Number	Per cent
Agriculture, forestry & fishing	193	2.8	746	6.0	1,571	8.2
Mining & quarrying	12	0.2	33	0.3	52	0.3
Manufacturing	858	12.6	1,462	11.8	2,091	10.9
Elec, gas, steam & air conditioning supply; Water supply; sewerage	167	2.4	325	2.6	440	2.3
Construction	594	8.7	1,023	8.3	1,647	8.6
Whsale & ret trade; repair motor vehicles...	1,550	22.7	2,431	19.7	3,395	17.7
Transport & Storage	300	4.4	514	4.2	792	4.1
Accommodation & Food Svc Activities	589	8.6	1,015	8.2	1,603	8.4
Information & Communication	77	1.1	137	1.1	207	1.1
Financial & Insurance Activities	105	1.5	213	1.7	334	1.7
Real Estate; Professional, Scientific & Technical; Admin. & Support Svc.	556	8.1	1,042	8.4	1,711	8.9
Pub Admin & Defence; Compulsory Social Security	252	3.7	469	3.8	755	3.9
Education	471	6.9	900	7.3	1,364	7.1
Human Health & Social Work	778	11.4	1,444	11.7	2,249	11.7
Other	329	4.8	607	4.9	975	5.1
Occupation (aged 16-74 in employment)	Number	Per cent	Number	Per cent	Number	Per cent
Managers, Directors and Senior Officials	678	9.9	1,251	10.1	2,053	10.7
Professional Occupations	627	9.2	1,316	10.6	2,123	11.1
Associate Professional and Technical Occupations	532	7.8	1,072	8.7	1,624	8.5
Administrative and Secretarial Occupations	588	8.6	1,025	8.3	1,645	8.6
Skilled Trades Occupations	1,026	15.0	2,049	16.6	3,430	17.9
Caring, Leisure and Other Service Occupations	747	10.9	1,330	10.8	1,999	10.4
Sales and Customer Service Occupations	850	12.4	1,225	9.9	1,626	8.5
Process, Plant and Machine Operatives	858	12.6	1,454	11.8	2,132	11.1
Elementary Occupations	925	13.5	1,639	13.3	2,554	13.3
Socio-Economic Classification (aged 16-74 in employment)	Number	Per cent	Number	Per cent	Number	Per cent
Higher Managerial, Admin & Prof Occupations	600	5.7	1,247	6.4	2,037	6.7
Lower Managerial, Admin & Prof Occupations	1,855	17.5	3,651	18.7	5,801	19.1
Intermediate Occupations	1,072	10.1	1,911	9.8	3,046	10.0
Small Employers & Own Account Workers	1,120	10.5	2,452	12.6	4,200	13.8
Lower Supervisory & Technical Occupations	983	9.3	1,730	8.9	2,664	8.8
Semi-Routine Occupations	2,425	22.8	4,086	20.9	5,952	19.6
Routine Occupations	1,673	15.8	2,854	14.6	4,247	14.0
Never Worked and Long-Term Unemployed	385	3.6	674	3.5	1,023	3.4
Not Classified	504	4.7	900	4.6	1,356	4.5
Highest Level of Qualification (aged 16+)	Number	Per cent	Number	Per cent	Number	Per cent
No qualifications	3,549	29.0	6,432	28.8	9,952	28.6
Level 1 qualifications	1,908	15.6	4,187	18.8	6,691	19.2
Level 2 qualifications	2,037	16.7	2,774	12.4	3,936	11.3
Apprenticeship	631	5.2	762	3.4	959	2.8
Level 3 qualifications	1,254	10.3	2,042	9.2	3,116	9.0
Level 4 qualifications and above	2,263	18.5	4,848	21.7	7,983	22.9
Other qualifications	578	4.7	1,267	5.7	2,170	6.2