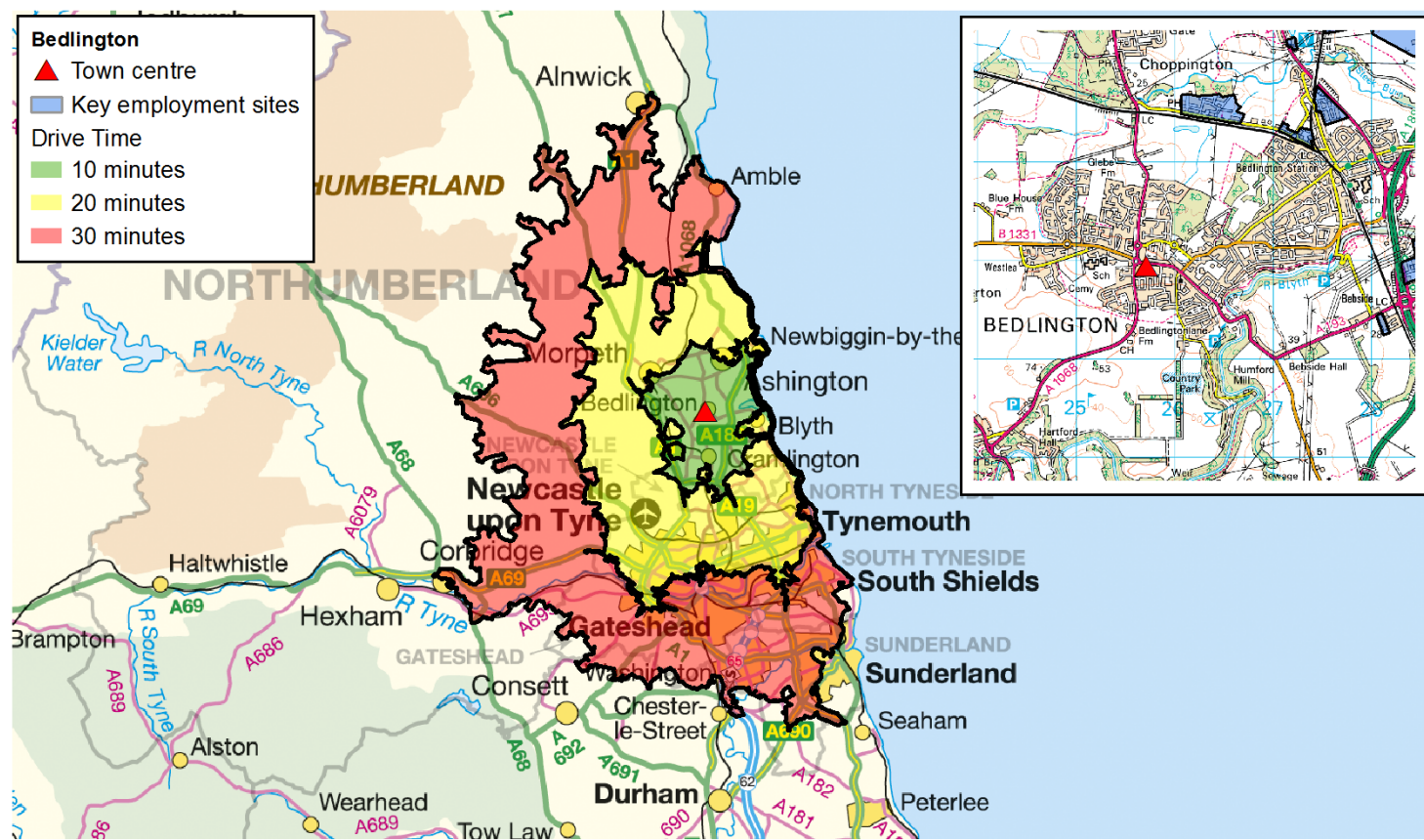


This fact sheet relates to people living within a 10, 20 and 30 minute drive time of Bedlington.



Published September 2013. Scale: 1:750,000 © Crown Copyright. All rights reserved. Northumberland County Council - OS Licence No. 100049048. Road network and journey time data provided by the Department for Transport and Trafficmaster.

WHO WE ARE	10 Minutes		20 Minutes		30 Minutes	
Key Population Statistics (all usual residents)	Number	Per cent	Number	Per cent	Number	Per cent
All People	100,929	-	562,480	-	1,196,070	-
Males	48,852	48.4	273,288	48.6	584,975	48.9
Females	52,077	51.6	289,192	51.4	611,095	51.1
16 – 64 years	64,747	64.2	365,506	65.0	783,784	65.5
16 – 24	10,575	10.5	67,732	12.0	153,003	12.8
25 - 44	25,086	24.9	144,294	25.7	309,766	25.9
45 – 64	29,086	28.8	153,480	27.3	321,015	26.8
65 -74 years	9,930	9.8	50,282	8.9	105,897	8.9
Number of people per hectare	8.9	-	9.3	-	8.3	-
HOW WE LIVE	10 Minutes		20 Minutes		30 Minutes	
Households (all household spaces)	Number	Per cent	Number	Per cent	Number	Per cent
All Households	43,888	96.6	246,317	96.6	523,601	96.4
Average Household size	2.3	-	2.3	-	2.2	-
Household by Tenure (all households)	Number	Per cent	Number	Per cent	Number	Per cent
Owned outright	12,687	28.9	70,772	28.7	138,853	26.5
Owned with a mortgage or loan/shared ownership	16,344	37.2	87,169	35.4	172,916	33.0
Social rented	9,963	22.7	53,995	21.9	138,398	26.4
Private rented including living rent free	4,894	11.2	34,381	14.0	73,434	14.0
Car or Van Availability (all households)	Number	Per cent	Number	Per cent	Number	Per cent
No cars or vans in household	11,094	25.3	74,751	30.3	179,619	34.3
1 car or van in household	19,508	44.4	107,971	43.8	219,820	42.0
2 or more cars or vans in household	13,286	30.3	63,595	25.8	124,162	23.7
Average number of cars or vans per household	1.1	-	1.0	-	1.0	-

WHAT WE DO	10 Minutes		20 Minutes		30 Minutes	
	Number	Per cent	Number	Per cent	Number	Per cent
Economic activity (aged 16-74)						
Economically active	50,630	67.8	283,041	68.1	593,831	66.7
Full-time employee	29,508	39.5	162,170	39.0	335,023	37.7
Part-time employee	11,009	14.7	58,776	14.1	123,896	13.9
Self-employed	4,426	5.9	27,516	6.6	55,707	6.3
Unemployed	3,880	5.2	20,230	4.9	46,832	5.3
Full-time student	1,807	2.4	14,349	3.5	32,373	3.6
Economically inactive	24,047	32.2	132,747	31.9	295,850	33.3
Industry (aged 16-74 in employment)	Number	Per cent	Number	Per cent	Number	Per cent
Agriculture, forestry & fishing	187	0.4	749	0.3	1,643	0.3
Mining & quarrying	244	0.5	1,037	0.4	2,123	0.4
Manufacturing	5,182	11.2	21,813	8.4	50,853	9.4
Elec, gas, steam & air conditioning supply; Water supply; sewerage	660	1.4	3,217	1.2	7,624	1.4
Construction	3,644	7.9	19,217	7.4	40,209	7.5
Whsale & ret trade; repair motor vehicles...	6,901	14.9	38,226	14.7	82,698	15.3
Transport & Storage	2,146	4.6	11,788	4.5	26,200	4.9
Accommodation & Food Svc Activities	2,252	4.9	14,634	5.6	32,161	6.0
Information & Communication	1,230	2.7	9,093	3.5	17,065	3.2
Financial & Insurance Activities	1,301	2.8	8,306	3.2	16,619	3.1
Real Estate; Professional, Scientific & Technical; Admin. & Support Svc.	4,402	9.5	28,221	10.9	58,219	10.8
Pub Admin & Defence; Compulsory Social Security	4,960	10.7	25,230	9.7	47,907	8.9
Education	3,767	8.1	25,307	9.8	50,699	9.4
Human Health & Social Work	7,545	16.3	40,833	15.7	80,295	14.9
Other	1,902	4.1	11,752	4.5	24,595	4.6
Occupation (aged 16-74 in employment)	Number	Per cent	Number	Per cent	Number	Per cent
Managers, Directors and Senior Officials	3,915	8.5	22,449	8.7	45,425	8.4
Professional Occupations	5,977	12.9	45,725	17.6	86,366	16.0
Associate Professional and Technical Occupations	5,498	11.9	30,041	11.6	60,475	11.2
Administrative and Secretarial Occupations	6,387	13.8	34,782	13.4	69,544	12.9
Skilled Trades Occupations	5,329	11.5	27,462	10.6	59,666	11.1
Caring, Leisure and Other Service Occupations	5,157	11.1	24,978	9.6	52,115	9.7
Sales and Customer Service Occupations	4,695	10.1	27,293	10.5	58,268	10.8
Process, Plant and Machine Operatives	4,071	8.8	18,528	7.1	42,872	8.0
Elementary Occupations	5,294	11.4	28,165	10.9	64,179	11.9
Socio-Economic Classification (aged 16-74 in employment)	Number	Per cent	Number	Per cent	Number	Per cent
Higher Managerial, Admin & Prof Occupations	5,063	6.8	38,266	9.2	71,806	8.1
Lower Managerial, Admin & Prof Occupations	14,663	19.6	83,190	20.0	164,666	18.5
Intermediate Occupations	11,123	14.9	59,868	14.4	121,359	13.6
Small Employers & Own Account Workers	4,857	6.5	27,560	6.6	57,218	6.4
Lower Supervisory & Technical Occupations	6,539	8.8	30,869	7.4	67,363	7.6
Semi-Routine Occupations	12,681	17.0	63,699	15.3	141,672	15.9
Routine Occupations	11,076	14.8	51,812	12.5	122,152	13.7
Never Worked and Long-Term Unemployed	4,251	5.7	23,257	5.6	56,708	6.4
Not Classified	4,424	5.9	37,267	9.0	86,737	9.7
Highest Level of Qualification (aged 16+)	Number	Per cent	Number	Per cent	Number	Per cent
No qualifications	21,748	26.4	112,026	24.2	253,731	25.7
Level 1 qualifications	12,418	15.1	62,690	13.6	136,580	13.9
Level 2 qualifications	14,168	17.2	72,029	15.6	151,863	15.4
Apprenticeship	3,962	4.8	21,586	4.7	47,297	4.8
Level 3 qualifications	10,777	13.1	60,790	13.1	129,197	13.1
Level 4 qualifications and above	16,430	19.9	115,346	24.9	226,731	23.0
Other qualifications	3,005	3.6	18,012	3.9	40,043	4.1