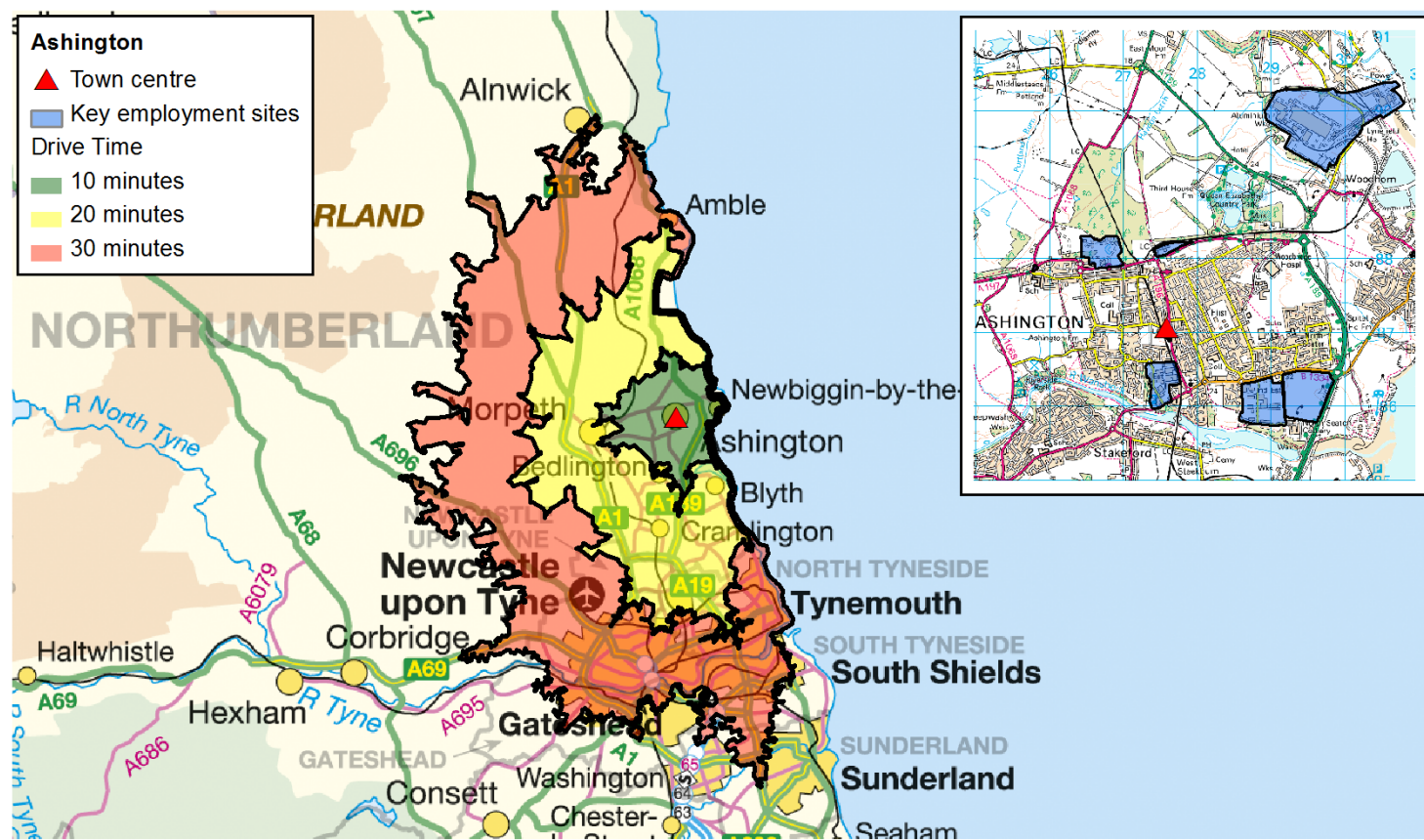




Northumberland Knowledge 2011 Census Travel Isochrones Fact Sheet

Ashington

This fact sheet relates to people living within a 10, 20 and 30 minute drive time of Ashington.



Published September 2013. Scale: 1:650,000 © Crown Copyright. All rights reserved. Northumberland County Council - OS Licence No. 100049048. Road network and journey time data provided by the Department for Transport and Trafficmaster.

WHO WE ARE	10 Minutes		20 Minutes		30 Minutes	
Key Population Statistics (all usual residents)	Number	Per cent	Number	Per cent	Number	Per cent
All People	62,539	-	234,889	-	868,709	-
Males	30,476	48.7	114,312	48.7	426,444	49.1
Females	32,063	51.3	120,577	51.3	442,265	50.9
16 – 64 years	40,070	64.1	151,073	64.3	574,145	66.1
16 – 24	6,687	10.7	24,044	10.2	117,859	13.6
25 - 44	15,817	25.3	60,276	25.7	227,703	26.2
45 – 64	17,566	28.1	66,753	28.4	228,583	26.3
65 -74 years	6,109	9.8	22,559	9.6	73,956	8.5
Number of people per hectare	7.1	-	5.2	-	7.9	-
HOW WE LIVE	10 Minutes		20 Minutes		30 Minutes	
Households (all household spaces)	Number	Per cent	Number	Per cent	Number	Per cent
All Households	27,850	94.8	103,396	96.5	380,729	96.2
Average Household size	2.2	-	2.2	-	2.2	-
Household by Tenure (all households)	Number	Per cent	Number	Per cent	Number	Per cent
Owned outright	7,931	28.5	29,649	28.7	98,454	25.9
Owned with a mortgage or loan/shared ownership	9,569	34.4	37,936	36.7	124,131	32.6
Social rented	6,245	22.4	23,149	22.4	99,512	26.1
Private rented including living rent free	4,105	14.7	12,662	12.2	58,632	15.4
Car or Van Availability (all households)	Number	Per cent	Number	Per cent	Number	Per cent
No cars or vans in household	8,203	29.5	27,445	26.5	132,314	34.8
1 car or van in household	12,212	43.8	46,326	44.8	159,852	42.0
2 or more cars or vans in household	7,435	26.7	29,625	28.7	88,563	23.3
Average number of cars or vans per household	1.0	-	1.1	-	0.9	-

WHAT WE DO	10 Minutes		20 Minutes		30 Minutes	
	Number	Per cent	Number	Per cent	Number	Per cent
Economic activity (aged 16-74)						
Economically active	30,840	66.8	118,438	68.2	431,520	66.6
Full-time employee	17,554	38.0	68,947	39.7	241,677	37.3
Part-time employee	6,698	14.5	25,460	14.7	88,844	13.7
Self-employed	2,618	5.7	10,970	6.3	40,875	6.3
Unemployed	3,005	6.5	9,002	5.2	34,209	5.3
Full-time student	965	2.1	4,059	2.3	25,915	4.0
Economically inactive	15,339	33.2	55,194	31.8	216,581	33.4
Industry (aged 16-74 in employment)	Number	Per cent	Number	Per cent	Number	Per cent
Agriculture, forestry & fishing	137	0.5	558	0.5	1,262	0.3
Mining & quarrying	194	0.7	582	0.5	1,580	0.4
Manufacturing	2,976	10.8	10,791	9.9	33,825	8.7
Elec, gas, steam & air conditioning supply; Water supply; sewerage	426	1.5	1,471	1.4	4,941	1.3
Construction	2,157	7.8	8,724	8.0	28,676	7.3
Whsale & ret trade; repair motor vehicles...	4,090	14.8	16,204	14.9	58,682	15.0
Transport & Storage	1,243	4.5	4,900	4.5	18,234	4.7
Accommodation & Food Svc Activities	1,364	4.9	5,430	5.0	24,526	6.3
Information & Communication	552	2.0	3,354	3.1	13,223	3.4
Financial & Insurance Activities	546	2.0	3,172	2.9	11,874	3.0
Real Estate; Professional, Scientific & Technical; Admin. & Support Svc.	2,397	8.7	10,692	9.9	43,144	11.0
Pub Admin & Defence; Compulsory Social Security	2,738	9.9	11,773	10.9	35,416	9.1
Education	2,043	7.4	8,974	8.3	37,342	9.6
Human Health & Social Work	5,534	20.1	17,209	15.9	59,784	15.3
Other	1,183	4.3	4,642	4.3	18,240	4.7
Occupation (aged 16-74 in employment)	Number	Per cent	Number	Per cent	Number	Per cent
Managers, Directors and Senior Officials	2,192	7.9	9,204	8.5	32,844	8.4
Professional Occupations	3,241	11.8	15,268	14.1	65,780	16.8
Associate Professional and Technical Occupations	2,883	10.5	12,778	11.8	44,339	11.3
Administrative and Secretarial Occupations	3,376	12.2	15,004	13.8	49,975	12.8
Skilled Trades Occupations	3,274	11.9	12,642	11.7	42,221	10.8
Caring, Leisure and Other Service Occupations	3,691	13.4	11,504	10.6	37,995	9.7
Sales and Customer Service Occupations	2,708	9.8	11,091	10.2	42,033	10.8
Process, Plant and Machine Operatives	2,660	9.6	8,870	8.2	29,270	7.5
Elementary Occupations	3,555	12.9	12,115	11.2	46,292	11.8
Socio-Economic Classification (aged 16-74 in employment)	Number	Per cent	Number	Per cent	Number	Per cent
Higher Managerial, Admin & Prof Occupations	2,424	5.2	12,863	7.4	54,546	8.4
Lower Managerial, Admin & Prof Occupations	8,203	17.8	34,459	19.8	119,949	18.5
Intermediate Occupations	6,233	13.5	26,233	15.1	86,430	13.3
Small Employers & Own Account Workers	3,087	6.7	11,850	6.8	41,264	6.4
Lower Supervisory & Technical Occupations	4,312	9.3	14,671	8.4	47,493	7.3
Semi-Routine Occupations	8,364	18.1	28,868	16.6	100,127	15.4
Routine Occupations	7,659	16.6	24,845	14.3	85,512	13.2
Never Worked and Long-Term Unemployed	3,359	7.3	9,991	5.8	42,022	6.5
Not Classified	2,538	5.5	9,852	5.7	70,758	10.9
Highest Level of Qualification (aged 16+)	Number	Per cent	Number	Per cent	Number	Per cent
No qualifications	14,844	29.0	49,970	25.9	179,468	25.0
Level 1 qualifications	7,711	15.1	28,792	14.9	96,306	13.4
Level 2 qualifications	8,829	17.2	32,623	16.9	108,376	15.1
Apprenticeship	2,202	4.3	9,436	4.9	32,787	4.6
Level 3 qualifications	6,637	13.0	24,204	12.6	98,017	13.7
Level 4 qualifications and above	9,018	17.6	40,537	21.0	171,852	24.0
Other qualifications	1,963	3.8	7,160	3.7	29,783	4.2