



# Learn. Discover. Grow.

Endless possibilities...

**YOUR FRESH GUIDE TO LEARNING ACROSS NORTHUMBERLAND 2021-2022**  
SCHOOL LEAVERS' GUIDE



## Learn. Discover. Grow.

Welcome to your fresh guide to learning across Northumberland.

If you're getting ready to leave school, or you've recently completed GCSEs, study with Northumberland Skills to kick-start your future career.

Delivering on behalf of Northumberland County Council's Learning & Skills Service, we have evolved to become '**Northumberland Skills**'. Our experienced team of lecturers are ready to support you to realise your potential with a full-time study programme this September.

Our fresh blend of hands-on and digital learning has been designed to keep you safe, whilst helping you to gain essential skills to stand out in life and work.

### YOUR SAFETY IS OUR PRIORITY

From social distancing to clear directional signage, sanitising stations, managed class sizes and rapid testing; we are doing everything we can to ensure that you feel safe on campus and we're continuously updating our procedures to maintain your safety in the classroom.

During induction every learner will receive further information about staying safe and the measures we have put in place. For more information about how we're keeping you safe on campus, see [bit.ly/ns-safeoncampus](https://bit.ly/ns-safeoncampus)

Check out our courses at a glance on page 7 to see what's available from September 2021 near you.

## Live and learn local

With campuses across the county, we can offer you an education programme at one of our locations across Northumberland.

We can help you to gain the qualifications and training you need for work or further study, and we'll support you every step of the way.

To help you to take the best next steps, we've broken down the content in this learning guide to help you to understand each option and what to do next.

If you're aged 16-18 years, our courses are free. If you're a young adult aged 19+, speak to our team as courses may be free (eligibility criteria apply).

**Your learning journey starts on page 5**

**Your course choices from page 7**

**Your support network explained on page 26**

**Your success story unfolds from page 28**

If you need to contact a member of the team at any point, email us on **[learn@northumberland.gov.uk](mailto:learn@northumberland.gov.uk)** or see the full list of our campuses on page 31.







## Achieve your goals

Whether you are looking for a stepping stone to Higher Education or studying to gain skills for the world of work, we have a huge selection of course options and pathways to lead you to your goal of university or a job.

### 10 REASONS TO STUDY LOCALLY WITH NORTHUMBERLAND SKILLS:

1. The convenience of learning on your doorstep at one of our six campuses across the county
2. Learning locally means lower transport costs and we have lots of free parking at many of our campuses
3. Free wireless WiFi networks in our classrooms and social areas
4. Managed class sizes to ensure a safe learning environment that put your health and safety first
5. A blend of hands-on learning and digital competencies to help you gain essential skills for life and work
6. One-to-one support when you need it, either in person or online
7. Dedicated careers advisors and curriculum experts to help you every step of the way
8. Links to local employers to connect you to opportunities
9. 24/7 online access to a wide range of learning resources, including full access to the Northumberland Library Service
10. Ofsted has rated us good with outstanding features

## Your learning journey starts here

Studying with us means you'll gain more than just a qualification, you'll learn skills for life and work - as well as the confidence to succeed in your next steps.

**Skills  
for work**

Endless possibilities...

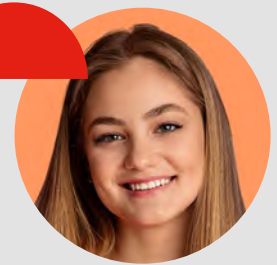
### **SEND**

Bespoke courses to develop communication, confidence and study skills for learners who need extra help to progress to Level 1.



### **LEVEL 1**

GCSEs Grade 1-3 or vocational competency qualifications at Level 1.



### **LEVEL 2**

GCSEs Grade 4-9 or vocational competency qualifications at Level 2 and Apprenticeships at Level 2.



### **LEVEL 3**

A Levels or vocational competency qualifications at Level 3, as well as Apprenticeships at Level 3.



## Need some extra help to decide which is the best level for you?

Our dedicated team, including specialised lecturers, are ready to help. They can advise which level to start at, as well as helping you choose the route that will best suit your interests and aspirations. Call your local team (details on page 31) or **email [learn@northumberland.gov.uk](mailto:learn@northumberland.gov.uk)**

We offer courses at a range of entry points to ensure that your level of study is best suited to your abilities and aspirations. Each course has particular entry criteria - see specific course entry requirements online at **[www.northumberland.gov.uk/learn](http://www.northumberland.gov.uk/learn)**

## More than just a qualification

Providing exciting opportunities for young people and adults locally is at the core of all that we do here at Northumberland Skills. We understand that learning stretches beyond the classroom and that's why studying with us brings you so much more than just a qualification.



Contact us on  
[learn@northumberland.gov.uk](mailto:learn@northumberland.gov.uk)  
or see the full list of our  
campuses on page 31.

### SKILLS FOR WORK

We recognise that functional skills including English, maths and the development of digital skills are critical to your future success, and expected by an employer when you enter the world of work. We will support you to achieve nationally recognised qualifications or GCSEs as part of your course and ensure that you build essential skills to make you more employable.

### CONFIDENT AND READY

Boosting your skills and self-confidence is our priority – by the time you complete your qualification with us, we want you to feel confident and ready to progress to a job or further study. No matter which subject you choose to specialise in, we ensure that you feel inspired and empowered to achieve your best, accessing support along the way to keep you on track to reach your goal.

### BLENDED LEARNING

Through an engaging mixture of classroom-based learning and practical skills, digital mentoring and e-learning – plus independent study and work placements – learning with us offers you the perfect blend of academic and life skills to help you succeed.

When you finish your initial course, we can recommend your next steps, like a higher-level course, or help you to apply for jobs and apprenticeships.

### WORK EXPERIENCE AND EMPLOYER CONNECTIONS

Experience of the world of work is an important part of your learning, and work experience forms an integral part of your study programme with us. Our business networks and strong employer partnerships offer you a competitive edge upon completion of your studies. We also have a range of employers endorsing each of our education programmes, so that you can feel assured that you're working towards an industry standard qualification.

Not only can work experience help you to make sure you've made the right career choice, it gives you the valuable experience that every employer is looking for, showing that you can handle the world of work, an environment totally different to studying at school.

## Bringing learning to you

If you're looking to approach learning in a new way, you've come to the right place.

Our portfolio of courses for school leavers have been designed with your future in mind. Our lecturers have a wealth of experience and employer contacts to ensure that course content is tailored to suit the needs of industry, and that you gain the skills employers are looking for.



THE TABLE BELOW SHOWS OUR RANGE OF COURSES AND LOCATIONS AT A GLANCE:

COURSE TITLE	ALNWICK	BERWICK	BLYTH	HAYDON BRIDGE	MORPETH	PRUDHOE
Business & Digital Skills	✓				✓	✓
Childcare & Education	✓	✓	✓			✓
Construction	✓			✓		
Engineering			✓			
Hair & Beauty				✓		
Health & Social Care	✓	✓				
Professional Cookery				✓		
SEND	✓					✓

Why go anywhere else when you can  
**Learn. Discover. Grow.**

## Take your pick

Our full-time study programmes allow you to dive straight into your vocational area of choice. Not only will your qualification help you to stand out when looking for a job, you'll have the skills, aptitudes and requirements to progress to further and higher study with us or at university.



### Business & Digital Skills

Study levels available:  
Level 1 and Level 2

**More on page 10**



### Childcare and Education

Study levels available:  
Level 1 and Level 2

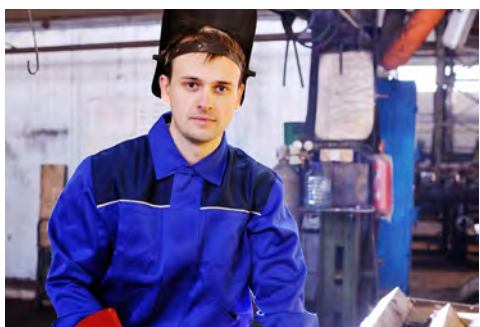
**More on page 12**



### Construction

Study levels available:  
Level 1 and Level 2

**More on page 14**



### Engineering

Study levels available:  
Level 1 and Level 2

**More on page 16**



---

**Enrol now for September** - You can drop in to your local campus during normal office hours and someone will be available to help answer your questions or point you in the right direction for further information.



## **Hair & Beauty**

Study levels available: Level 1

**More on page 18**



## **Health & Social Care**

Study levels available: Level 1

**More on page 20**



## **Professional cookery**

Study levels available: Level 1

**More on page 22**



## **Students with additional needs and/or disabilities (SEND)**

Bespoke programmes of study

**More on page 24**

## Business & Digital Skills

Level of study: Level 1 and Level 2

Study at: **Alnwick, Morpeth or Prudhoe**

### Courses available:

- Diploma in Skills for Working in Business & Customer Service Industries, Level 1 (Alnwick or Morpeth)
- Diploma in Skills for Working in Business & Customer Service Industries, Level 2 (Alnwick)
- Diploma in Skills for Working in Digital Technology Industries, Level 1 (Alnwick or Prudhoe)
- Diploma in Skills for Working in Digital Technology Industries, Level 2 (Alnwick)



### DEVELOP YOUR TALENTS

Business skills are of real value to employers in any workplace. You'll learn the key aspects and functions of a business, as well as developing your digital skills across various IT packages and the use of photography and imagery in digital applications.

### STUDY SKILLS AND WORK EXPERIENCE

You will develop skills outside the classroom through work placements or experiences to put the theory you've learned into practice.

Tutorial and study skills will cover topics such as employability skills, interview skills, finances and the world of work. Leadership and enterprise skills alongside health, wellbeing, confidence and building your resilience, ensure your professional and personal development are prioritised alongside your studies.

### ENGLISH AND MATHS

English and maths are essential parts of your studies – support needed to achieve these will be determined depending on your prior attainment.

### PROGRESSION AND CAREERS

There are a wide range of careers available and job roles include: administrator, receptionist, personal assistant, manager, office supervisor or team leader.

The top destinations for our learners include wholesale and retail trade, professional industries, finance and insurance, administrative and support services as well as accommodation and food service. Our business course is also ideal if you want to be self-employed and are looking for the skills and confidence to start your own business.





# Childcare and Education

Level of study: Level 1 and Level 2

**Study at: Alnwick, Berwick, Blyth or Prudhoe**



## Courses available:

- Certificate in Caring for Children, Level 1 (in Alnwick, Berwick, Blyth and Prudhoe)
- Diploma in the Early Years Practitioner, Level 2 (in Alnwick, Berwick or Prudhoe)
- Certificate in Supporting Teaching and Learning, Level 2 (in Alnwick, Berwick or Blyth)

### DEVELOP YOUR TALENTS

Are you caring, patient and creative? Do you have a lot of energy, a passion for developing the skills of others and great communication skills? Then a career in childcare and education could be for you. You'll have the opportunity to enhance your skills and learn techniques to play your part in shaping the future of others.

### ENGLISH AND MATHS

English and maths are essential parts of your studies – support needed to achieve these will be determined depending on your prior attainment.

### STUDY SKILLS AND WORK EXPERIENCE

You will develop skills outside the classroom through work placements or experiences to put the theory you've learned into practice.

Tutorial and study skills will cover topics such as employability skills, interview skills, finances and the world of work. Leadership and enterprise skills alongside health, wellbeing, confidence and building your resilience, ensure your professional and personal development are prioritised alongside your studies.

### PROGRESSION AND CAREERS

There are many rewarding jobs if you want to help nurture the next generation such as nursery worker, playgroup assistant, childminder, creche assistant, pre-school assistant, teaching assistant and playworker.

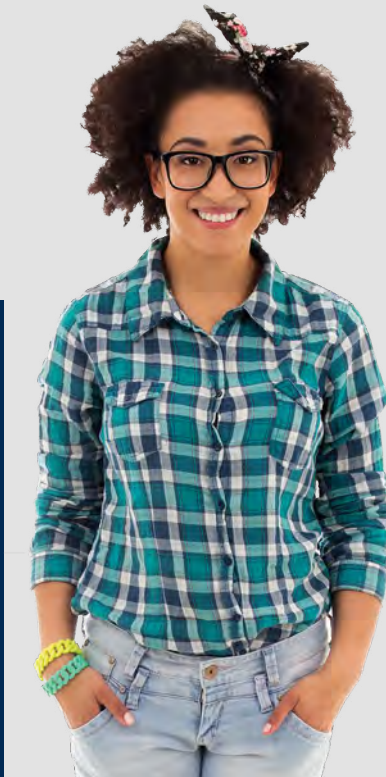




# Construction

Level of study: Level 1 and Level 2

Study at: **Alnwick or Haydon Bridge**



## Courses available:

- Diploma in Construction Skills, Level 1 (in Alnwick or Haydon Bridge)
- Diploma in Carpentry & Joinery, Level 1 (in Alnwick)
- Diploma in Bricklaying, Level 2 (in Alnwick)

## DEVELOP YOUR TALENTS

Do you want to learn a trade, work in a team and get hands on? If you've got the energy and commitment then the construction industry could be for you. Our range of courses set you up with a skill for life – a trade to utilise within a company or by setting up your own business.

Our courses cover construction operations and supervision, carpentry and joinery, bricklaying plus many other aspects of general maintenance and refurbishment.

## STUDY SKILLS AND WORK EXPERIENCE

You will develop skills outside the classroom through work placements or experiences to put the theory you've learned into practice.

Tutorial and study skills will cover topics such as employability skills, interview skills, finances and the world of work. Leadership and enterprise skills alongside health, wellbeing, confidence and building your resilience, ensure your professional and personal development are prioritised alongside your studies.

## ENGLISH AND MATHS

English and maths are essential parts of your studies – support needed to achieve these will be determined depending on your prior attainment.

## PROGRESSION AND CAREERS

A construction course can lead to lots of different careers such as bricklayer/mason, plasterer, roofer, carpenter, construction labourer, painter and decorator.







# Engineering

Level of study: Level 1 and Level 2

**Study at: Blyth**



## Courses available:

- Certificate in Introductory Welding, Fabrication & Cutting Skills, Level 1 (in Blyth)
- Diploma in Performing Engineering Operations (PEO), welding pathway, Level 2 (in Blyth)

## DEVELOP YOUR TALENTS

If you're interested in understanding how things are made and why they work, you'll enjoy being part of the innovative world of engineering and manufacturing.

A diverse and dynamic industry well suited to problem solvers, logical thinkers and doers; gaining skills across the broad engineering industry will support you to strive for a career in mechanical or electrical engineering, engineering design or R&D, as well as the renewable energy sector, construction and space.

## STUDY SKILLS AND WORK EXPERIENCE

You will develop skills outside the classroom through work placements or experiences to put the theory you've learned into practice.

Tutorial and study skills will cover topics such as employability skills, interview skills, finances and the world of work. Leadership and enterprise skills alongside health, wellbeing, confidence and building your resilience, ensure your professional and personal development are prioritised alongside your studies.

## ENGLISH AND MATHS

English and maths are essential parts of your studies – support needed to achieve these will be determined depending on your prior attainment.

## PROGRESSION AND CAREERS

The skills you'll gain from our engineering courses open up pathways to a wide range of career opportunities and apprenticeships including: welder, engineering and production technicians, operatives, mechanical engineers etc.







We work in collaboration with Northumberland College to provide a welding and fabrication offer to suit the needs of individuals and local businesses. Watch this space for further developments in Blyth from Northumberland Skills in early 2022.

# Hair & Beauty

Level of study: Level 1

Study at: Haydon Bridge

## Courses available:

- Diploma in Hair and Beauty, Level 1 (in Haydon Bridge)



## DEVELOP YOUR TALENTS

If you have a passion for making people look and feel their best and you enjoy being sociable, then look no further than a career in Hair and Beauty.

At our professional campus in Haydon Bridge, you'll get to experience what it's like to work in a beauty salon, developing skills such as providing effective shampooing and conditioning, cutting and dressing hair, colour and lightening and consultation.

Our beauty courses cover skincare and applying makeup. You will also develop a sound knowledge of health and safety as well as the customer service skills needed to make you work-ready.

## STUDY SKILLS AND WORK EXPERIENCE

You will develop skills outside the classroom through work placements or experiences to put the theory you've learned into practice.

Tutorial and study skills will cover topics such as employability skills, interview skills, finances and the world of work. Leadership and enterprise skills alongside health, wellbeing, confidence and building your resilience, ensure your professional and personal development are prioritised alongside your studies.

## ENGLISH AND MATHS

English and maths are essential parts of your studies – support needed to achieve these will be determined depending on your prior attainment.

## PROGRESSION AND CAREERS

There are many job opportunities in this sector including beauty therapist/consultant, colourist, hairdresser, nail technician. Your skills can open opportunities in spas or salons or you may want to set up your own business or work freelance.







# Health & Social Care

Level of study: Level 1

**Study at: Alnwick or Berwick**

## Courses available:

- Certificate in Work Preparation - Health & Social Care, Level 1 (in Alnwick, Berwick)



## DEVELOP YOUR TALENTS

Working in Health and Social Care is about providing personal and practical support to help people in their day to day lives. It is the perfect profession if you are a caring and compassionate person.

There is huge demand for workers to support those with a physical disability, Autism, dementia or a mental health condition. The work can be across a range of settings, for example care homes, hospitals, in the local community or someone's home.

## STUDY SKILLS AND WORK EXPERIENCE

You will develop skills outside the classroom through work placements or experiences to put the theory you've learned into practice.

Tutorial and study skills will cover topics such as employability skills, interview skills, finances and the world of work. Leadership and enterprise skills alongside health, wellbeing, confidence and building your resilience, ensure your professional and personal development are prioritised alongside your studies.

## ENGLISH AND MATHS

English and maths are essential parts of your studies – support needed to achieve these will be determined depending on your prior attainment.

## PROGRESSION AND CAREERS

Careers in this sector include: care worker, health care assistant, support worker, palliative care assistant. With experience and further qualifications, you can move into more senior roles, such as management, social work or nursing.







# Professional cookery

Level of study: Level 1

**Study at: Haydon Bridge**

## Courses available:

- Certificate in an Introduction to Culinary Skills, Level 1 (in Haydon Bridge)



## DEVELOP YOUR TALENTS

Do you enjoy working as part of a team, have boundless energy and a passion for food? Then a career in professional cookery could be for you. Exciting careers range from chefs to baristas or front of house staff to kitchen porters or catering assistants.

## ENGLISH AND MATHS

English and maths are essential parts of your studies – support needed to achieve these will be determined depending on your prior attainment.

## STUDY SKILLS AND WORK EXPERIENCE

You will develop skills outside the classroom through work placements or experiences to put the theory you've learned into practice.

Tutorial and study skills will cover topics such as employability skills, interview skills, finances and the world of work. Leadership and enterprise skills alongside health, wellbeing, confidence and building your resilience, ensure your professional and personal development are prioritised alongside your studies.

## PROGRESSION AND CAREERS

Once you have a qualification there are many types of places you can work including, cafes and restaurants, hotels, events and exhibitions, music festivals, agricultural shows and trade fairs.





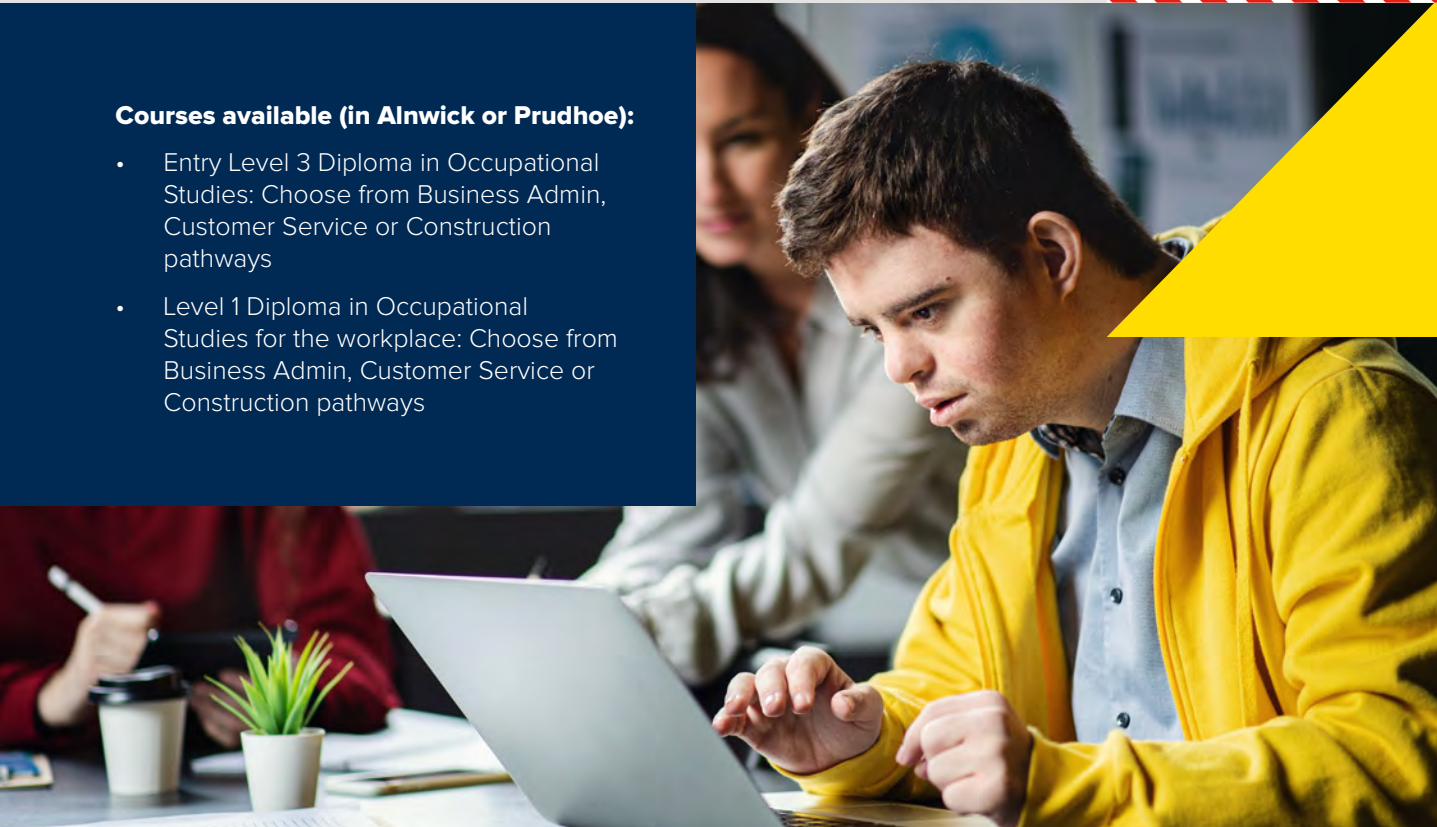
## Students with additional needs and/or disabilities (SEND)

Level of study: Bespoke level of study

Study at: **Alnwick or Prudhoe**

### Courses available (in Alnwick or Prudhoe):

- Entry Level 3 Diploma in Occupational Studies: Choose from Business Admin, Customer Service or Construction pathways
- Level 1 Diploma in Occupational Studies for the workplace: Choose from Business Admin, Customer Service or Construction pathways



### DEVELOP YOUR TALENTS

If you're aged between 16-24 and have learning difficulties, disabilities or are on the ASD spectrum and would like to develop skills and independence, we have a supportive range of courses for you.

You'll meet one of our team who'll talk with you to find out what your interests are, offering tailored support, advice and guidance. A bespoke programme will be designed which will help to develop your skills, improve your confidence and build self-esteem.

### ENRICHMENT AND PROGRESSION

- The course is over two years and follows a graduated approach
- Entry level has a strong focus on personal and social development with a progression to vocational in year two
- The course can lead towards work experience, supported internships and employment

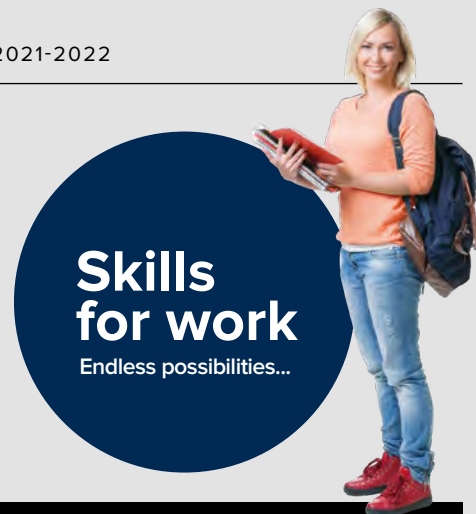
**Note:** these courses are for young people (aged 16-24 years) who have an EHCP or are referred through professional partnerships such as career advisors or head teachers.





## Your support network explained

From course choices and completing your application, to understanding the academic, financial and social support available to you, our careers guidance team are here to help.



### FINDING THE PERFECT COURSE

Choosing the correct study level and course for you isn't always easy. Our team of specialist curriculum advisers can help you to understand your skills, experience and aspirations to ensure that you start at the correct level, in a subject area or career that you want to pursue.

You can find out more about subject areas and specific course information sheets at:

[www.northumberland.gov.uk/learn](http://www.northumberland.gov.uk/learn)

### SECURING YOUR PLACE ON A COURSE

First of all, you need to complete an application – this gives us all the information we need so you can study with us. Once you have completed an application, you'll be called for an interview so that we can find out which course is perfect for you. Interviews may take place in person, online or over the telephone.

From here, enrolling is easy as our team of advisers will assist every step of the way to secure your place and give you all the information you need to start your journey.

### PROVIDING SUPPORT FOR LEARNERS WITH A DISABILITY AND/OR LEARNING DIFFICULTY

If you have SEND, ASD, or a physical disability, we can create a training pathway that suits you with all the support you need to achieve your goals. Whether it's preparation for adulthood or gaining skills for work, our experienced team have the skills and experience to help you expand your horizons in a safe, supportive environment.

**When you finish your course, we can also help you to secure work or further training.**

### NEXT STEPS AND CONTACT INFORMATION

Contact your local campus for more information or for any advice and guidance (see page 31 for contact details), email [learn@northumberland.gov.uk](mailto:learn@northumberland.gov.uk) or visit [www.northumberland.gov.uk/learn](http://www.northumberland.gov.uk/learn) for more information.



Why go anywhere else when you can  
**Learn. Discover. Grow.**







## Your success story unfolds

We are passionate about your success and have designed our courses to inspire you - boosting your skills, confidence and achievements.

### BE INSPIRED

We are here to help you work out what you enjoy and excel at, enabling you to aim high and strive for that dream job.

### STAND OUT SKILLS

Our experienced lecturers, dedicated support staff and tailored learning environments are ready for you to enjoy and develop the stand out skills you need to achieve the future you deserve.

### PROGRESSION AND CAREERS

You'll notice on all of our course pages that we talk about progression and careers. That's because your learning journey doesn't end here – our team of advisers and teaching staff will guide and support you to choose your next steps into further/higher education or the world of work.



You can also drop in to your local campus during normal office hours and someone will be available to help answer your questions or point you in the right direction for further information.

---

## Next steps

Come and find out more about our wide range of courses, see our facilities and get a taste of student life by visiting one of our campuses.

We offer courses for school leavers at many of our locations across the county, see the map opposite for further details about our campuses.

### YOUR SAFETY IS OUR PRIORITY

Rest assured that we are taking all the necessary precautions and have put measures in place to ensure that you feel safe and secure in our learning environments.

Our team of lecturers are also available over the telephone and online. Contact your local campus to speak to our team about your application, and for advice about course choices, or any part of the enrolment process.



# Learn. Discover. Grow.

with Northumberland Skills

## **ALNWICK CAMPUS**

Lindisfarne Road  
Alnwick, NE66 1AX  
Tel: 01670 623 691

## **BERWICK CAMPUS**

Walkergate  
Berwick upon Tweed,  
TD15 1DB  
Tel: 01670 626 107

## **BLYTH CAMPUS**

Sports Centre  
Blyth, NE24 5BT  
Tel: 01670 622 099

## **FUSE PRUDHOE CAMPUS**

Moor Road  
Prudhoe, NE42 5LJ  
Tel: 01670 623 689

## **HAYDON BRIDGE CAMPUS**

Haydon Bridge High  
School, NE47 6LR,  
Tel: 01670 622 258

## **MORPETH CAMPUS**

Cottingwood Lane  
Morpeth, NE61 1DN.  
Tel: 01670 622 257

## **WANSBECK WORKSPACE (Ashington)**

Rotary Parkway,  
Ashington, NE63 8QZ.  
Tel: 01670 623 894

## **WENTWORTH HEXHAM**

Wentworth Leisure Centre,  
Hexham, NE46 3PD.  
Tel: 01670 623 701

You can also email us to find out more [learn@northumberland.gov.uk](mailto:learn@northumberland.gov.uk)





**LOCATION KEY:**

- Alnwick Campus
- Berwick Campus
- Blyth Campus
- Fuse Prudhoe Campus
- Haydon Bridge Campus
- Wentworth Hexham Campus
- Morpeth Campus
- Wansbeck Workspace Campus



# Learn. Discover. Grow.

## with Northumberland Skills

We can help you to gain the qualifications you need for work or further study after leaving school and we'll support you every step of the way.

With campuses across the county, we can offer you an education programme at one of six locations across Northumberland.

Our enrolment lines are open:

**Monday to Friday from 9am until 5pm.**

**[www.northumberland.gov.uk/learn](http://www.northumberland.gov.uk/learn)**

ALNWICK | BERWICK | BLYTH | HAYDON BRIDGE | HEXHAM | MORPETH  
| PRUDHOE | WANSBECK WORKSPACE

### DISCLAIMER

Northumberland Skills takes all reasonable steps to provide the services and courses described in this prospectus. However, it does not guarantee the provision of such services. The provision of courses is dependent on there being sufficient demand and funding to make their operation viable. The information provided in this brochure is, to the best of our knowledge, accurate at the time of going to print. We accept no liability for any errors or omissions and we reserve the right to alter, amend or remove courses listed without notice.

### OTHER FORMATS

If you need this information in large print, Braille, Audio, or in another format or language please contact us: 01670 622 099. If you are Deaf or can't speak on the phone, contact us using Relay UK. Download the Relay UK app or using your existing text phone prefix our dedicated text Relay number: 018001 01670 623 515. British Sign Language users can contact us using an online sign language interpreting service: [northumberlandcc-cs.signvideo.net](http://northumberlandcc-cs.signvideo.net)

@NorthumberlandCC @nlandcc @N\_LandCouncil



@NorthumberlandSkills



@NorthumberlandSkills



@NlandSkills