

Private Fostering

Information for Professionals



Do you know about a child being looked after by someone other than their parents?

NORTHUMBERLAND

Northumberland County Council



Private Fostering is where parents make arrangements for their child to live with somebody else (not a close relative) for 28 days or more



If you answer YES to ALL of the following questions a child you are working with or aware of is likely to be privately fostered



Is the child under 16 or under 18 if they have a disability?



Is the child living with somebody who is not a close relative? – this could be a cousin, great aunt, great uncle or a family friend



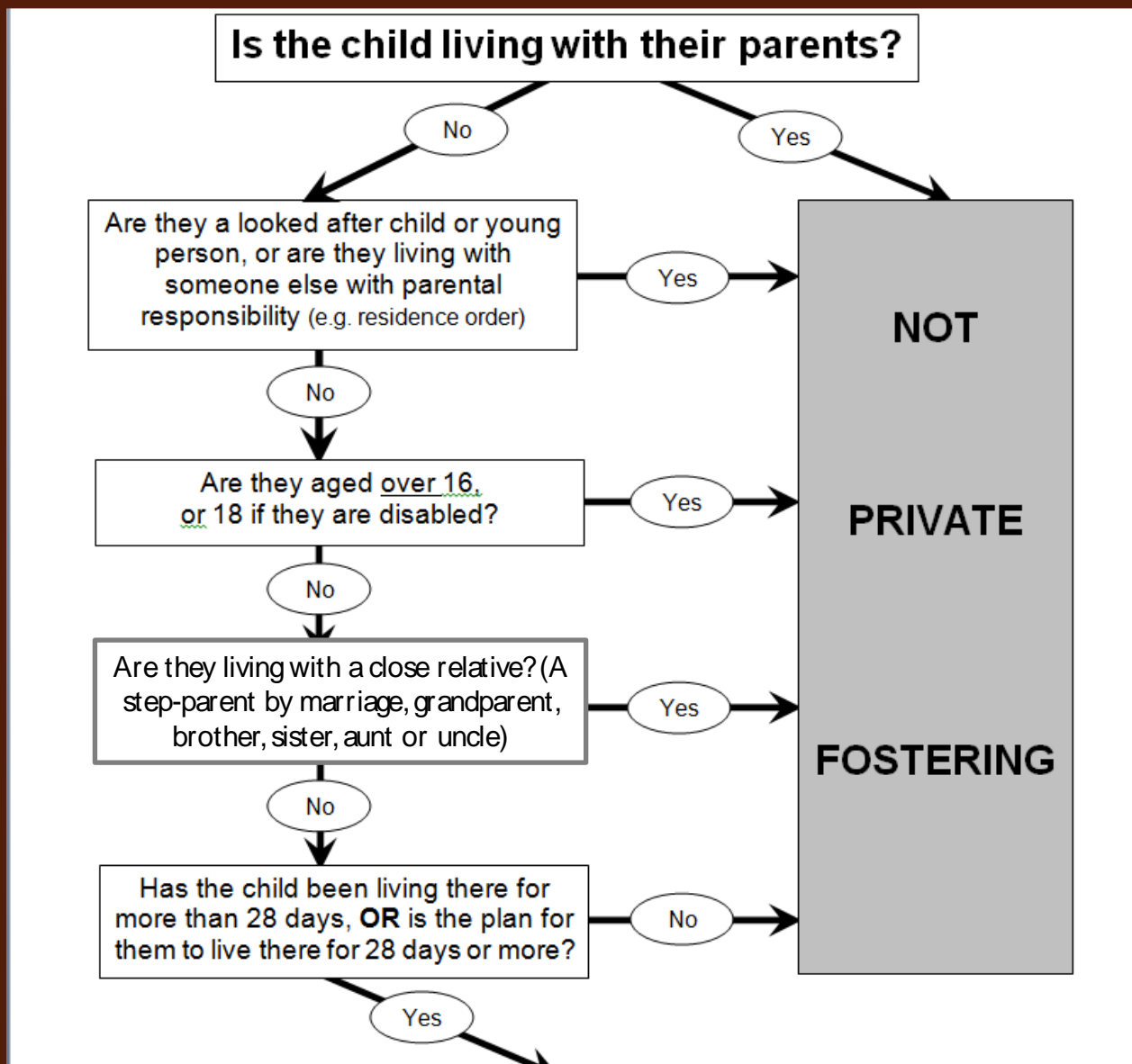
Is the child going to be living with somebody else for more than 28 days or have they already been living with somebody else for more than 28 days?

Some examples of situations when private fostering arrangements are made:

- ✓ **Parents working away from home**
- ✓ **Parents studying or working unsocial hours**
- ✓ **Illness**
- ✓ **Children from abroad who come to this country for education or health care**
- ✓ **Parental separation, divorce or arguments at home.**



Flow Chart: Is the child living in a Private Fostering Arrangement?



THIS IS PROBABLY A PRIVATE FOSTERING ARRANGEMENT

All professionals are required to ensure the local authority knows about private fostering arrangements



Please contact Client Relations on 01670 623 978

All professionals are required to ensure the local authority knows about private fostering arrangements.

Procedure for professionals to notify the local authority

If you know or suspect that a child is being privately fostered:

- Find out from the carer and/or parent whether they have notified the Local Authority and if they have not advise them that they are legally required to notify.
- Let the carer and parent know of your responsibility to notify the Local Authority of a private fostering arrangement.
- Whether or not the carer and parent advise you they have notified the Local Authority you have a responsibility to refer to Children's Social Services.

You **MUST** refer the case to Children's Services by contacting Client Relations on
01670 623 978

For further information visit:

www.northumberland.gov.uk/private_fostering

Should this document be required in a different language or a format suitable for people with sensory impairments the service will make arrangements to provide this.