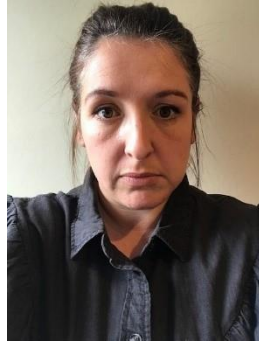


## PSYCHOLOGICAL SERVICES - MEET THE TEAM

			
<b>Paula Hesford</b> NIES Co Manager/ Educational Psychologist	<b>Katinka Bryan</b> NIES Co Manager / Senior Educational Psychologist	<b>Helen Tamworth</b> Senior Educational Psychologist	
			
<b>Chris Heslop</b> Educational Psychologist	<b>Lance Hardy</b> Educational Psychologist	<b>Gill Turner</b> Educational Psychologist	<b>Jill Sandeman</b> Educational Psychologist
			
<b>Gina Seymour</b> Educational Psychologist	<b>Maria Martin- McKeever</b> Educational Psychologist	<b>Hilary Menzies</b> Educational Psychologist	<b>Scott Morley</b> Trainee Educational Psychologist
<p>All our Educational Psychologists (EPs) are registered with the Health and Care Professions Council (HCPC) and have completed a Doctorate or Master's degree in Educational Psychology and a first degree in Psychology. Prior to training as EPs, they have worked with children and young people in a variety of roles including as teachers.</p> <p>We also work with Associate and Locum EPs who are commissioned for specific pieces of work, usually statutory assessments. We are pleased to support the training of new Educational Psychologists, supervising trainees from University Educational Psychology Doctorate Courses.</p>			



**Emma Holleywell**  
**Senior Mental Health Lead Co-Ordinator**

Emma Holleywell is working to support the Mental Health Support Teams in Schools Trailblazer Project and the graduated approach to wellbeing and Mental Health in the county.



**Rebecca Lowes**  
**Assistant Educational Psychologist**



**Fran Booth**  
**Assistant Educational Psychologist**



**Vicky Houghton**  
**Assistant Educational Psychologist**



**Tyler Nicholson**  
**Assistant Educational Psychologist**

Rebecca Lowes, Fran Booth, Vicky Houghton and Tyler Nicholson are all Assistant Educational Psychologists who support the work of Psychological Services and the Mental Health Support Teams.



**Michelle Thomas**  
**Admin Assistant**



**Dorothy MacDonald**  
**Office Manager**



**Allison Hall**  
**Admin Assistant**



**Siobhan Daghish**  
**Admin Assistant**

Our Admin Team – Dorothy Macdonald, Allison Hall, Michelle Thomas and Siobhan Daghish are qualified in IT and business administration. They have vast experience within Northumberland County Council, predominantly Children’s Services. They are knowledgeable of the functions and systems within the service and of the support available to children and young people.