



**Children with an SEN involvement (not EHCP or statement)
with social care involvement in the past 12 months**

December 2017

Children with an SEN involvement (not EHCP or statement) with social care involvement

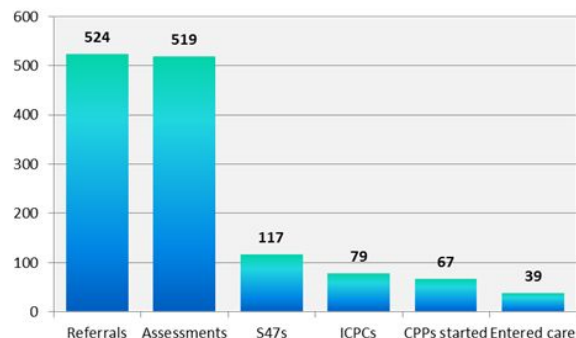
In past 12 months (up to 7 December 2017):

524 referrals (for 474 children)

519 assessments

117 S47s, **79** ICPCs

67 CP plans started, **39** entered care



2,936 children known to children's social care (2,083 now closed)

447 currently open (406 contact only)

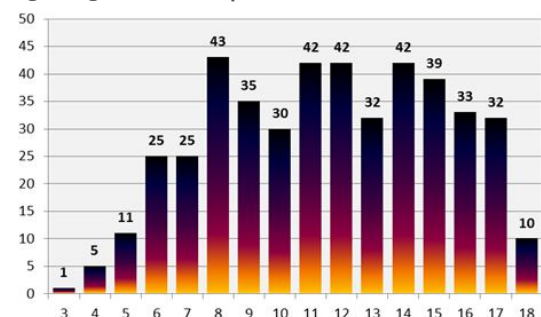
301 currently CiN

92 currently in care

55 currently with a Child Protection plan (1 also LAC)

59% male  **41%** female 

Age range of current open cases with SEN involvement



Children with an SEN involvement (not EHCP or statement) with social care involvement



12% where there were concerns about parental alcohol misuse
(15% for parents of all children)



9% where there were concerns about parental drug misuse
(13% for all parents of all children)



22% where there were concerns about one parent being subject to domestic violence
(28% for all parents of all children)



28% where there were concerns about the mental health of at least one parent
(31% for all parents of all children)



3% where there were concerns about a parent's learning disability
(3% for all parents of all children)



10% where there were concerns about a physical disability of a parent
(7% for all parents of all children)

Children with an SEN involvement (not EHCP or statement) with social care involvement



5% where there were concerns
about a child's alcohol misuse
(4% for all children assessed)



5% where there were concerns
about a child's drug misuse
(4% for all children assessed)



6% where there were concerns
about a child being subject to
domestic violence
(10% for all children assessed)



30% where there were concerns
about the mental health of a child
(19% for all children assessed)



8% where there were concerns
about a child's learning disability
(9% for all children assessed)



4% where there were concerns
about a physical disability of a child
(4% for all children assessed)

Children with an SEN involvement (not EHCP or statement) with social care involvement

Northumberland 2020

BUILT to
SERVE



7% concerns about a child's health or development being impaired due to them being a young carer
(3% for all children assessed)



0% where services may be required or the child may be at risk as a privately fostered child
(0.2% for all children assessed)



5% where services may be required or the child may be at risk due to going / being missing
(3% for all children assessed)



4% where services may be required or the child may be at risk due to child sexual exploitation
(3% for all children assessed)



0% where services may be required or the child may be at risk due to trafficking
(0.2% for all children assessed)



0% where services may be required or the child may be at risk due to involvement with gangs
(0.2% for all children assessed)

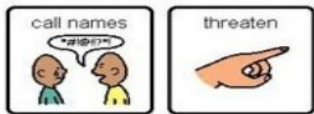
Children with an SEN involvement (not EHCP or statement) with social care involvement

Northumberland 2020

BUILT to
SERVE



15% where there are concerns about a child being at risk of harm due to their socially unacceptable behaviour
(9% for all children assessed)



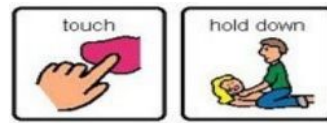
11% where there are concerns about a child being at risk due to emotional abuse
(13% for all children assessed)



9% where there are concerns about a child being at risk due to suspected / actual self harm
(6% for all children assessed)



4% where there are concerns about a child being at risk due to physical abuse
(7% for all children assessed)



3% where there are concerns about a child being at risk due to sexual abuse
(4% for all children assessed)

